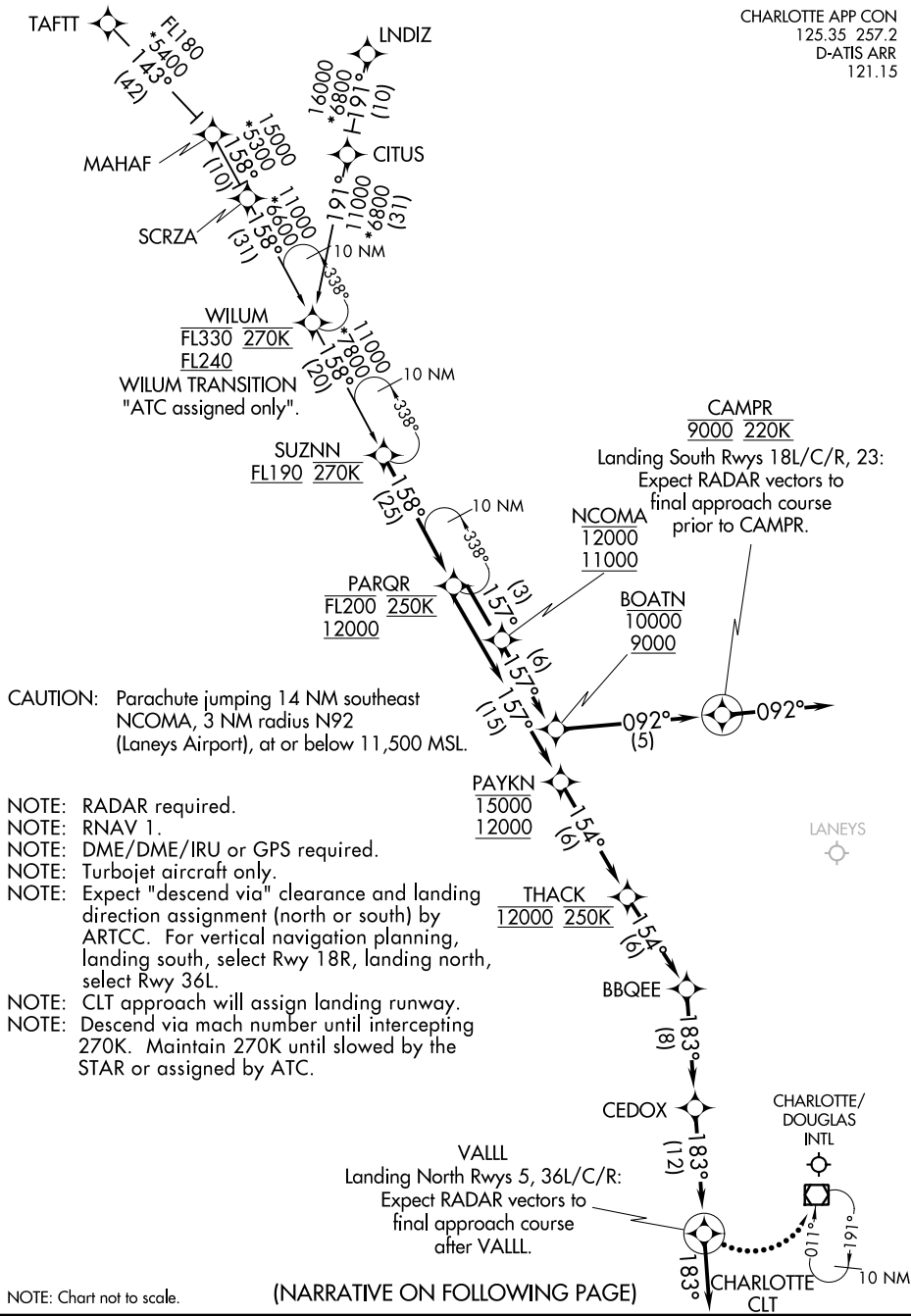


PARQR THREE ARRIVAL (RNAV)

CHARLOTTE APP CON
125.35 257.2
D-ATIS ARR
121.15



SE-2, 22 FEB 2024 to 21 MAR 2024

SE-2, 22 FEB 2024 to 21 MAR 2024

NOTE: Chart not to scale.

(NARRATIVE ON FOLLOWING PAGE)

PARQR THREE ARRIVAL (RNAV)

PARQR THREE ARRIVAL (RNAV)

ARRIVAL ROUTE DESCRIPTION

LNDIZ TRANSITION (LNDIZ.PARQR3)

TAFTT TRANSITION (TAFTT.PARQR3)

WILUM TRANSITION (WILUM.PARQR3)

From SUZNN on track 158° to cross PARQR between 12000 and FL200 and at 250K.

LANDING: RWYS 5, 36L/C/R: From PARQR on track 157° to cross PAYKN between 12000 and 15000, then on track 154° to cross THACK at 12000 and at 250K, then on track 154° BBQEE, then on track 183° to CEDOX, then on track 183° to VALLL, then on track 183°. Expect RADAR vectors to final approach course.

LANDING: RWYS 18L/C/R, 23: From PARQR on track 157° to cross NCOMA between 11000 and 12000, then on track 157° to cross BOATN between 9000 and 10000, then on track 092° to cross CAMPR at 9000 and at 220K, then on track 092°. Expect RADAR vectors to final approach course.

LOST COMMUNICATION: After VALLL turn left direct CLT VOR/DME and hold maintain 12000.

SE-2, 22 FEB 2024 to 21 MAR 2024

SE-2, 22 FEB 2024 to 21 MAR 2024