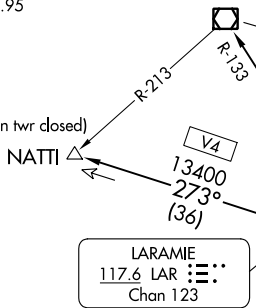


YELLOWSTONE FOUR DEPARTURE  
(YELLOW4.DEN) 16JUN20

YELLOWSTONE FOUR DEPARTURE  
AL-6851 (FAA)

DENVER DEP CON  
128.25 371.95  
ATIS  
119.025  
CLNC DEL  
124.7  
CLNC DEL  
121.75 (when twr closed)



MEDICINE BOW  
116.85 MBW  
Chan 115(Y)

RAPID CITY  
112.3 RAP  
Chan 70

SCOTTSBLUFF  
112.6 BFF  
Chan 73

CHEYENNE  
113.1 CYS  
Chan 78

LARAMIE  
117.6 LAR  
Chan 123

YAMMI  
12000 (For MEDICINE BOW transition only)

CHEYENNE  
113.1 CYS  
Chan 78

**TOP ALTITUDE:  
ASSIGNED BY ATC**

YALES  
10000  
343° (25)

COPLA  
9000  
110° (70)

FL230  
0005\*  
5000  
0006\*  
(612)

FL210  
\*8000  
0300  
0304  
(71)

GILL  
114.2 GLL  
Chan 89

YOKES  
9000  
101° (50)

DENVER  
117.9 DEN  
Chan 126

MOCA for HANKI transition only.

TAKEOFF MINIMUMS  
All runways: Standard.

NOTE: RADAR required.



NOTE: Chart not to scale.

(CONTINUED ON FOLLOWING PAGE)

DENVER, COLORADO  
COLORADO AIR AND SPACE PORT (CFO)

DENVER, COLORADO  
COLORADO AIR AND SPACE PORT (CFO)



DEPARTURE ROUTE DESCRIPTION

TAKEOFF ALL RUNWAYS: Fly assigned heading and altitude for RADAR vectors to assigned transition. Expect filed altitude 10 minutes after departure.

LOST COMMUNICATIONS: If no transmissions are received within one minute after departure, maintain assigned heading until 7000 feet, then climb to filed altitude direct DEN VOR/DME, then on assigned transition. If filed altitude is above 10000 feet, cross DEN VOR/DME at or above 11000 feet.

CHEYENNE TRANSITION (YELLOW4.CYS): From over DEN VOR/DME on DEN R-349 and CYS R-163 to CYS VORTAC.

HANKI TRANSITION (YELLOW4.HANKI): From over DEN VOR/DME on DEN R-015 and GLL R-034 to HANKI.

LARAMIE TRANSITION (YELLOW4.LAR): From over DEN VOR/DME on DEN R-334 and LAR R-125 to LAR VOR/DME.

MEDICINE BOW TRANSITION (YELLOW4.MBW): From over DEN VOR/DME on DEN R-334 and MBW R-133 to MBW VOR/DME.

NATTI TRANSITION (YELLOW4.NATTI): From over DEN VOR/DME on DEN R-334 and LAR R-125 to LAR VOR/DME, then on LAR R-273 to NATTI.

RAPID CITY TRANSITION (YELLOW4.RAP): From over DEN VOR/DME on DEN R-359 and GLL R-174 to GLL VOR/DME, then on GLL R-005 and RAP R-186 to RAP VORTAC.

SCOTTSBLUFF TRANSITION (YELLOW4.BFF): From over DEN VOR/DME on DEN R-015 and BFF R-191 to BFF VORTAC.

SW-1, 22 FEB 2024 to 21 MAR 2024

SW-1, 22 FEB 2024 to 21 MAR 2024