

WAAS CH <b>90440</b> <b>W13A</b>	APP CRS <b>134°</b>	Rwy Idg TDZE Apt Elev	<b>4148</b> <b>669</b> <b>674</b>
--	------------------------	-----------------------------	---

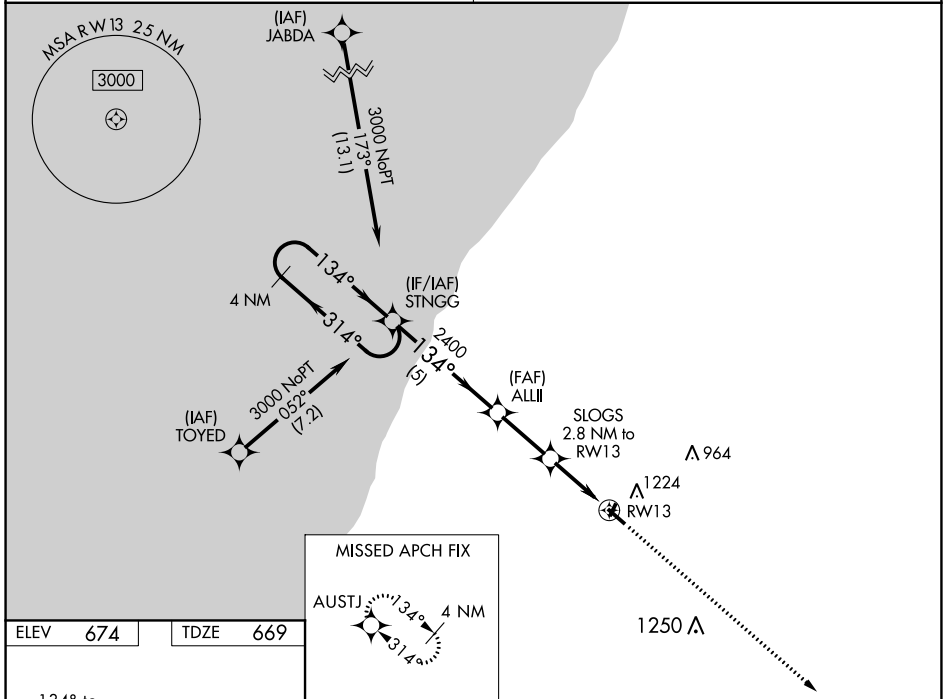
# RNAV (GPS) RWY 13

ANDREWS UNIVERSITY AIRPARK (C20)

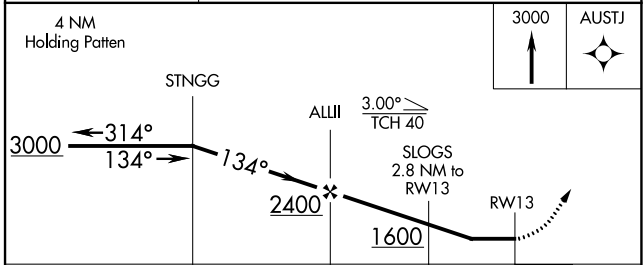
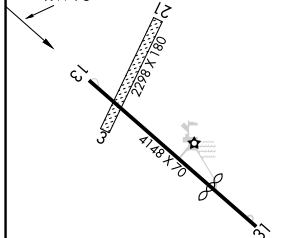
**⚠** Rwy 13 helicopter visibility reduction below 1 SM NA. DME/DME RNP-0.3 NA.  
**⚠** Procedure NA at night. Use Benton Harbor altimeter setting; when not received, use South Bend Int altimeter setting and increase all MDA 40 feet. Increase LP and LNAV Cats C/D visibility 1/8 SM and Circling Cats B/C 1/4 SM.

MISSED APPROACH: Climb to 3000 direct AUSTJ and hold.

SOUTH BEND APP CON * <b>118.55 257.8</b>	UNICOM <b>122.7 (CTAF) 0</b>
---	---------------------------------



ELEV 674	TDZE 669
----------	----------



CATEGORY	A	B	C	D
LP MDA	1100-1	431 (500-1)	1100-1¼	431 (500-1¼)
LNAV MDA	1280-1	611 (700-1)	1280-1¾	611 (700-1¾)
<b>C</b> CIRCLING	1620-1¼	946 (1000-1¼)	1620-2¾ 946 (1000-2¾)	1620-3 946 (1000-3)

EC-1, 15 JUL 2021 to 12 AUG 2021

EC-1, 15 JUL 2021 to 12 AUG 2021

WAAS CH <b>42840</b> W31A	APP CRS <b>314°</b>	Rwy Idg TDZE Apt Elev	<b>3019</b> <b>669</b> <b>674</b>
---------------------------------	------------------------	-----------------------------	---

# RNAV (GPS) RWY 31

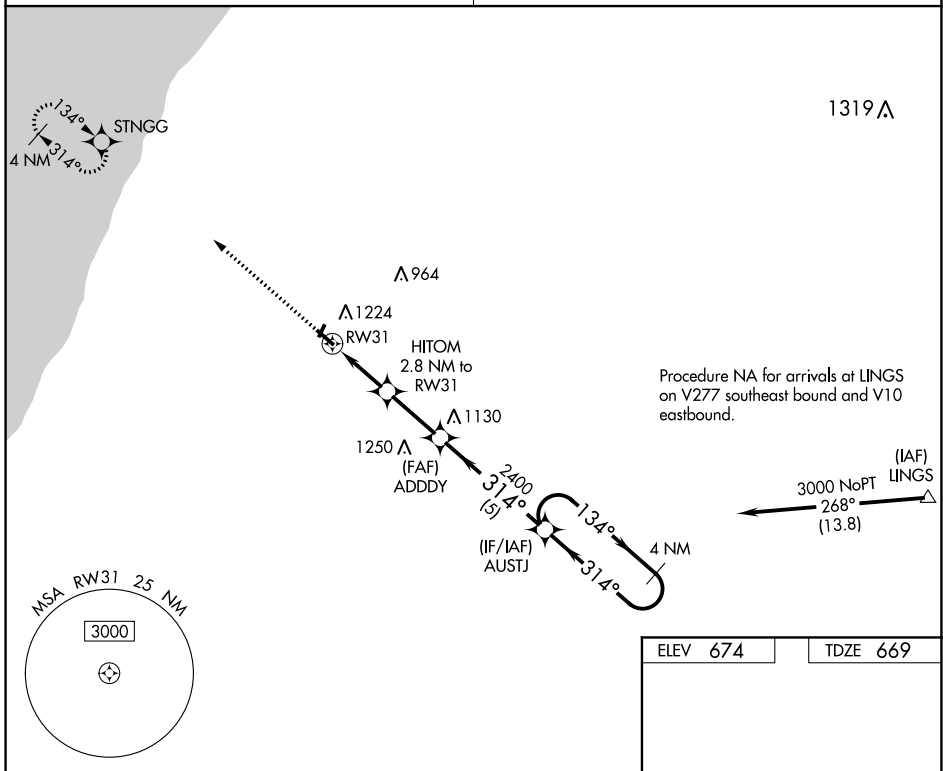
ANDREWS UNIVERSITY AIRPARK (C20)

**⚠** Rwy 31 helicopter visibility reduction below 1 SM NA. DME/DME RNP-0.3 NA. Procedure NA at night. Use Benton Harbor altimeter setting; when not received, use South Bend Intl altimeter setting and increase all MDA 40 feet. Increase LP and LNAV Cats C/D visibility 1/8 SM and Circling Cats B/C 1/4 SM.

**MISSED APPROACH:**  
Climb to 3000 direct STNGG and hold.

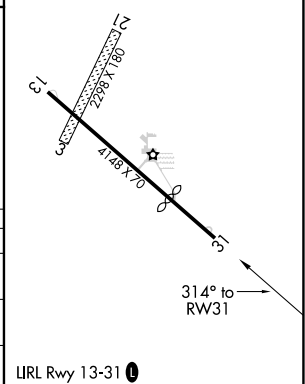
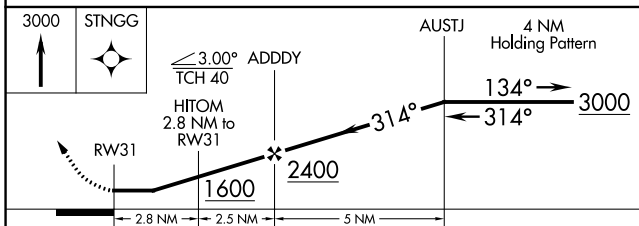
SOUTH BEND APP CON ★  
**118.55 257.8**

UNICOM  
**122.7 (CTAF) 0**



Procedure NA for arrivals at LINGS on V277 southeast bound and V10 eastbound.

ELEV 674	TDZE 669
----------	----------



CATEGORY	A	B	C	D
LP MDA	1100-1	431 (500-1)	1100-1¼	431 (500-1¼)
LNAV MDA	1160-1	491 (500-1)	1160-1¾	491 (500-1¾)
<b>C</b> CIRCLING	1620-1¼	946 (1000-1¼)	1620-2¾ 946 (1000-2¾)	1620-3 946 (1000-3)

IIRL Rwy 13-31 0

EC-1, 15 JUL 2021 to 12 AUG 2021

EC-1, 15 JUL 2021 to 12 AUG 2021