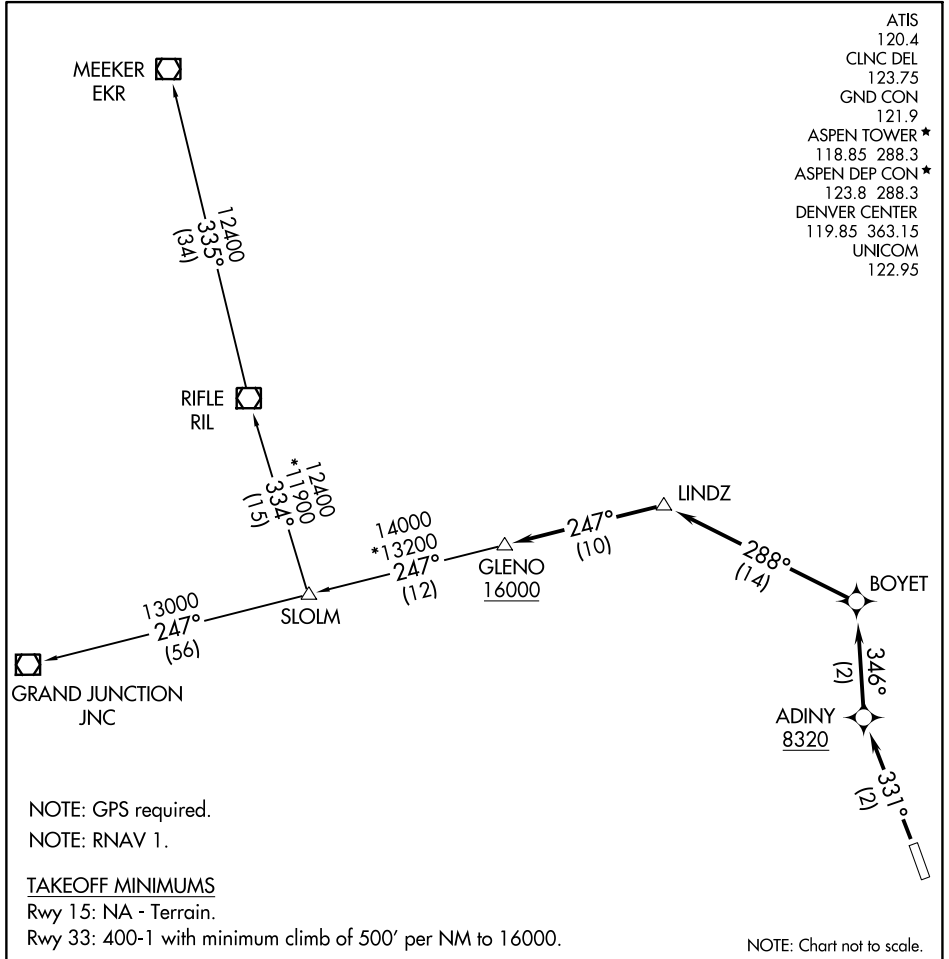


(PITKN4.GLENO) 21168

PITKN FOUR DEPARTURE (RNAV)

ASPEN-PITKIN COUNTY/SARDY FLD (A5E)
AL-5889 (FAA) ASPEN, COLORADO

- ATIS 120.4
- CLNC DEL 123.75
- GND CON 121.9
- ASPEN TOWER * 118.85 288.3
- ASPEN DEP CON * 123.8 288.3
- DENVER CENTER 119.85 363.15
- UNICOM 122.95



NOTE: GPS required.
NOTE: RNAV 1.

TAKEOFF MINIMUMS
Rwy 15: NA - Terrain.
Rwy 33: 400-1 with minimum climb of 500' per NM to 16000.

NOTE: Chart not to scale.

DEPARTURE ROUTE DESCRIPTION

TAKEOFF RUNWAY 33: Climb heading 331° to at or above 8320 direct ADINY, and climbing right turn to 16000 on track 346° to BOYET, and on track 288° to LINDZ, and on track 247° to GLENO, thence. . . .

. . . .via transition or assigned route, expect clearance to filed altitude 10 minutes after departure.

- GRAND JUNCTION TRANSITION (PITKN4.JNC)
- MEEKER TRANSITION (PITKN4.EKR)
- RIFLE TRANSITION (PITKN4.RIL)

PITKN FOUR DEPARTURE (RNAV)
(PITKN4.GLENO) 15NOV12

ASPEN, COLORADO
ASPEN-PITKIN COUNTY/SARDY FLD (A5E)

SW-1, 22 FEB 2024 to 21 MAR 2024

SW-1, 22 FEB 2024 to 21 MAR 2024