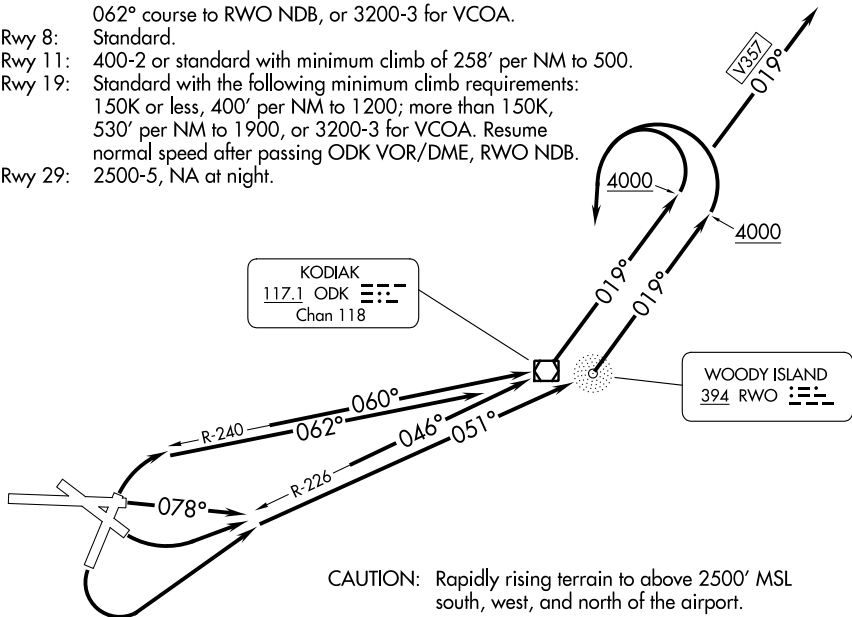


KODIAK SEVEN DEPARTURE (OBSTACLE)

TAKEOFF MINIMUMS:

- Rwy 26: NA - Terrain.
- Rwy 1: 1100-2 with a minimum climb of 445' per NM to 400, maintain 210K or less until established on the ODK R-240 or 062° course to RWO NDB, or 3200-3 for VCOA.
- Rwy 8: Standard.
- Rwy 11: 400-2 or standard with minimum climb of 258' per NM to 500.
- Rwy 19: Standard with the following minimum climb requirements: 150K or less, 400' per NM to 1200; more than 150K, 530' per NM to 1900, or 3200-3 for VCOA. Resume normal speed after passing ODK VOR/DME, RWO NDB.
- Rwy 29: 2500-5, NA at night.

GND CON 121.9
 KODIAK TOWER* 119.8 (CTAF) 239.0



TAKEOFF OBSTACLE NOTES:

- Rwy 1: Vehicles beginning 28' from DER, 147' right of centerline, up to 15' AGL/50' MSL. Vehicles beginning 56' from DER, 13' left of centerline, up to 15' AGL/50' MSL.
- Rwy 8: Vehicles beginning 37' from DER, left and right of centerline, 15' AGL/50' MSL. Trees and vegetation beginning 25' from DER, left and right of centerline, up to 15' AGL/23' MSL.
- Rwy 11: Ships beginning 2400' from DER, left and right of centerline, up to 35' AGL/35' MSL. Tree 10' from DER, 411' right of centerline, 38' AGL/64' MSL. Tree 78' from DER, 330' right of centerline, 23' AGL/49' MSL. Vegetation 132' from DER, 469' right of centerline, 17' AGL/43' MSL. Ships beginning 3564' from DER, left and right of centerline, 210' AGL/210' MSL. Tree 1.7 NM from DER, 2679' right of centerline, up to 100' AGL/360' MSL.
- Rwy 19: Vehicles beginning 5' from DER, left and right of centerline, up to 15' AGL/59' MSL. Trees and bushes beginning 31' from DER, 490' right of centerline, up to 50' AGL/84' MSL. Building 1682' from DER, 608' right of centerline, 51' AGL/103' MSL. Trees beginning 2183' from DER, left and right of centerline, up to 100' AGL/133' MSL. Trees beginning 3355' from DER, left and right of centerline, up to 100' AGL/169' MSL.
- Rwy 29: Trees beginning 13' from DER, 370' right of centerline, up to 39' AGL/76' MSL. Vehicles 160' from DER, 486' left of centerline, up to 15' AGL/73' MSL. Trees, bushes, and terrain beginning 184' from DER, 123' left of centerline, up to 100' AGL/185' MSL. Trees, vehicle, bushes, and terrain beginning 130' from DER, right of centerline, up to 100' AGL/268' MSL.

(CONTINUED ON FOLLOWING PAGE)

NOTE: Chart not to scale.

KODIAK SEVEN DEPARTURE (OBSTACLE)

AK, 25 JAN 2024 to 21 MAR 2024

AK, 25 JAN 2024 to 21 MAR 2024

KODIAK SEVEN DEPARTURE (OBSTACLE)

DEPARTURE ROUTE DESCRIPTION

TAKEOFF RWY 1: Initiate a climbing right turn as soon as practicable but not later than the DER to intercept ODK VOR/DME R-240 to ODK, or 062° course to RWO NDB. Thence. . . .

TAKEOFF RWY 8: Climb heading 078° to intercept ODK VOR/DME R-226 to ODK, or 051° course to RWO NDB. Thence. . . .

TAKEOFF RWY 11: Climbing left turn to intercept ODK VOR/DME R-226 to ODK, or 051° course to RWO NDB. Thence. . . .

TAKEOFF RWY 19: Climbing left turn to intercept ODK VOR/DME R-226 to ODK, or 051° to RWO NDB. Thence. . . .

TAKEOFF RWY 29: Climb in visual conditions direct ODK VOR/DME or RWO NDB (visual conditions must be maintained from takeoff until established over ODK VOR/DME or RWO NDB); cross ODK VOR/DME, or RWO NDB, at or above 2400 MSL. Thence. . . .

VISUAL CLIMB OVER AIRPORT RWYS 1, 19: Obtain ATC approval for VCOA when requesting IFR clearance. Climb in visual conditions to cross Kodiak Airport at or above 3100 to intercept ODK R-226 to ODK or 062° course to RWO NDB. Thence. . . .

. . . .climb to 4000 via ODK VOR/DME R-019 or 019° bearing from RWO NDB. V357 proceed on course, all others climbing left turn direct ODK VOR/DME or RWO NDB and then proceed on course.

AK, 25 JAN 2024 to 21 MAR 2024

AK, 25 JAN 2024 to 21 MAR 2024