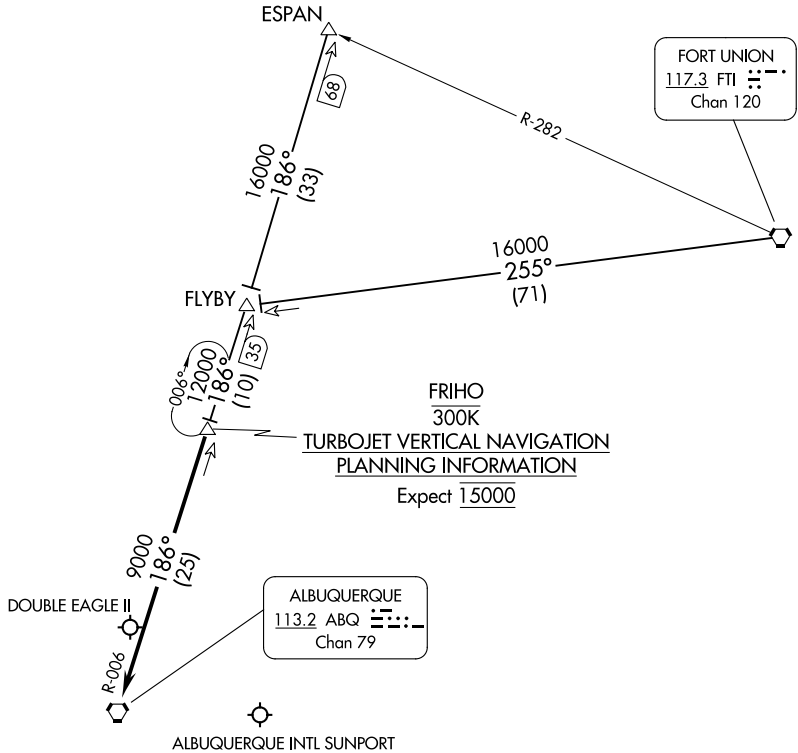


SW-1, 22 FEB 2024 to 21 MAR 2024

SW-1, 22 FEB 2024 to 21 MAR 2024



FRIHO
300K
TURBOJET VERTICAL NAVIGATION
PLANNING INFORMATION
Expect 15000

NOTE: DME required.
NOTE: Chart not to scale.

ESPAN TRANSITION (ESPAN.FRIHO4): From over ESPAN DME fix via ABQ R-006 to FRIHO DME fix, thence. . . .

FORT UNION TRANSITION (FTI.FRIHO4): From over FTI VORTAC via FTI R-255 and ABQ R-006 to FRIHO DME fix, thence. . . .

. . . .From over FRIHO DME fix via ABQ R-006 to ABQ VORTAC. Expect vectors to final approach course after passing FRIHO DME fix.