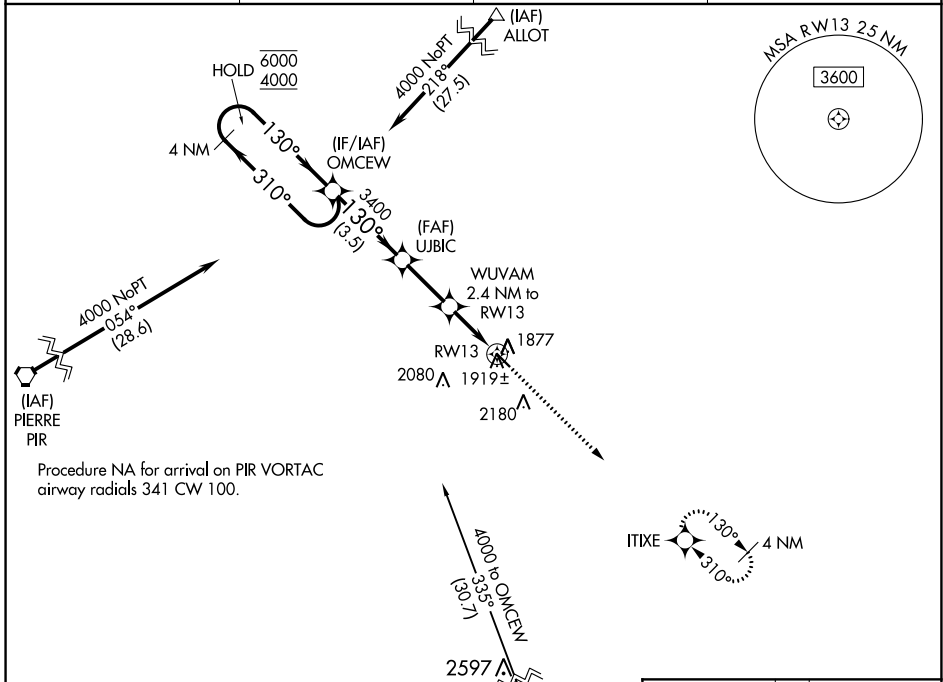


WAAS CH 72839 W13A	APP CRS 130°	Rwy Idg TDZE Apt Elev	3701 1852 1854
--	------------------------	-----------------------------	---

RNAV (GPS) RWY 13

HIGHMORE MUNI (9D)

RNP APCH.		MISSED APPROACH: Climb to 4000 direct ITIXE and hold.	
▼ Baro-VNAV NA. Use Onida altimeter setting; when not received, use Pierre altimeter setting and increase LPV and LNAV/VNAV DA to 2226 and all MDAs 40 feet.			
PIR ASOS 119.025	98D AWOS-2 122.9	MINNEAPOLIS CENTER 125.1 269.1	CTAF 122.9



4 NM Holding Pattern		OMCEW		4000 ITIXE	
6000 ← 310°		→ 130°		*LNAV only	
4000		130°		↑	
GP 3.00°		3400		✦	
TCH 40		*2640		✦	
		3.5 NM		2.4 NM	
				2.4 NM	
CATEGORY	A	B	C	D	
LPV DA	2192-1½	340 (400-1½)		NA	
LNAV/VNAV DA	2192-1½	340 (400-1½)		NA	
LNAV MDA	2260-1	408 (500-1)		NA	
☐ CIRCLING	2460-1 606 (700-1)	2600-1 746 (800-1)		NA	

MIRL Rwy 13-31

NC-1, 16 JUN 2022 to 14 JUL 2022

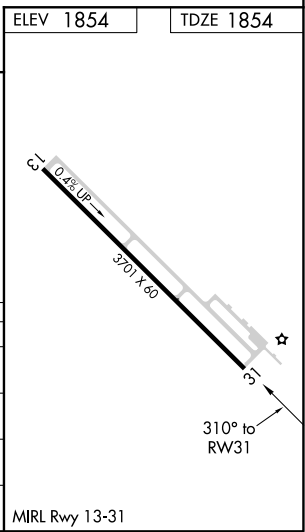
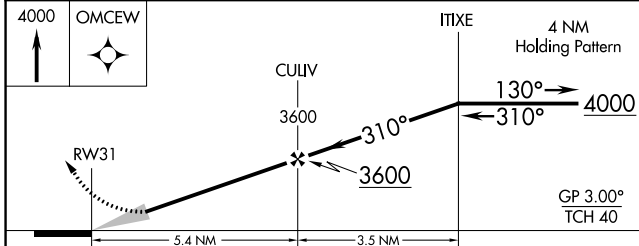
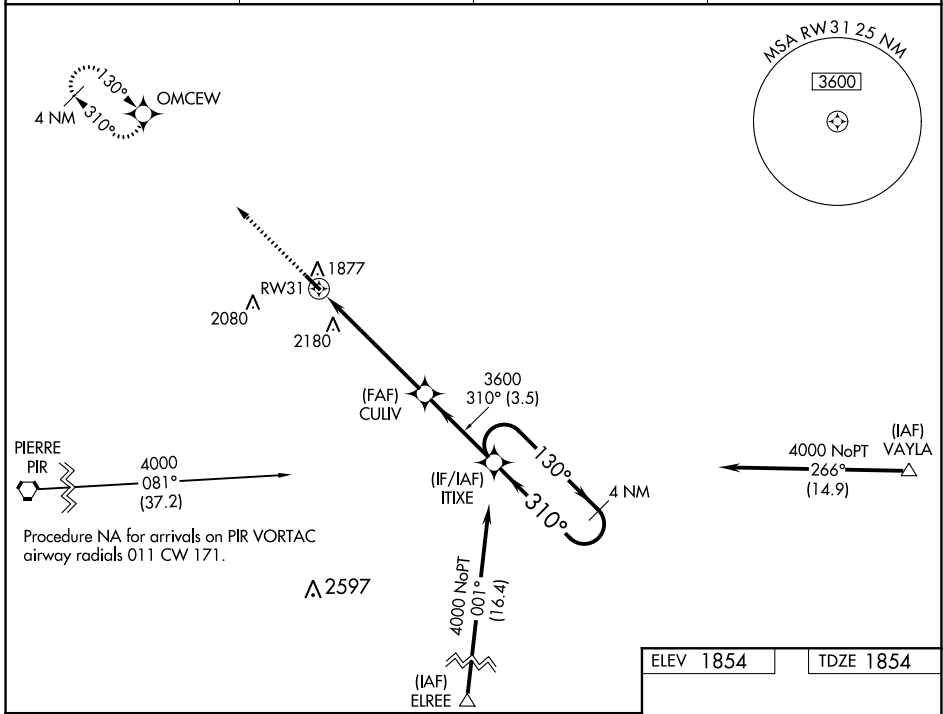
NC-1, 16 JUN 2022 to 14 JUL 2022

WAAS CH 40437 W31A	APP CRS 310°	Rwy Idg TDZE Apt Elev	3701 1854 1854
--	------------------------	-----------------------------	---

RNAV (GPS) RWY 31

HIGHMORE MUNI (9D \emptyset)

V NA Baro-VNAV NA. DME/DME RNP-0.3 NA. Use Pierre altimeter setting; when not received, procedure NA.	MISSED APPROACH: Climb to 4000 direct OMCEW and hold.		
	PIR ASOS 119.025	98D AWOS-2 122.9	MINNEAPOLIS CENTER 125.1 269.1



CATEGORY	A	B	C	D
LPV DA	2205-1 $\frac{1}{8}$	351 (400-1 $\frac{1}{8}$)		NA
LNAV/VNAV DA	2519-2 $\frac{1}{2}$	665 (700-2 $\frac{1}{2}$)		NA
LNAV MDA	2540-1	686 (700-1)		NA
C CIRCLING	2540-1 686 (700-1)	2600-1 746 (800-1)		NA

NC-1, 16 JUN 2022 to 14 JUL 2022

NC-1, 16 JUN 2022 to 14 JUL 2022