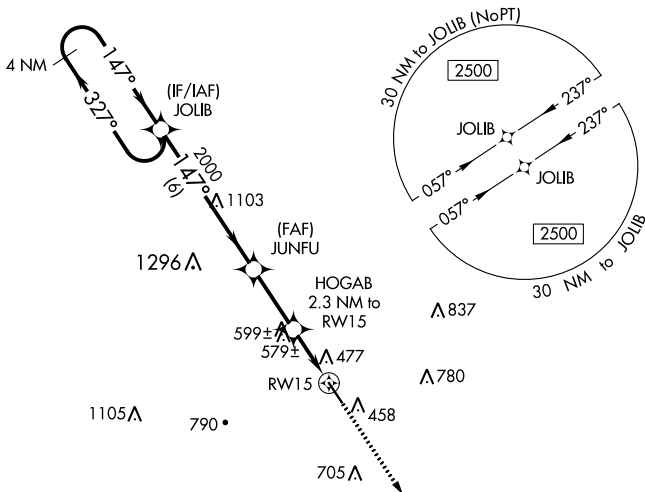


WAAS CH <b>49234</b> <b>W15A</b>	APP CRS <b>147°</b>	Rwy Idg TDZE Apt Elev	<b>5003</b> <b>392</b> <b>392</b>
--	------------------------	-----------------------------	---

# RNAV (GPS) RWY 15

BOONEVILLE/BALDWIN (8M1)

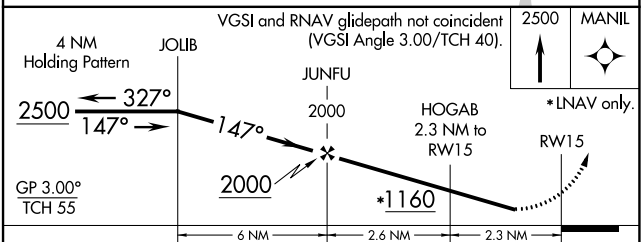
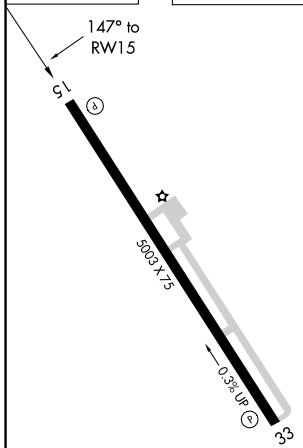
RNP APCH.		MISSED APPROACH: Climb to 2500 direct MANIL and hold.
<p><b>⚠</b> Baro-VNAV NA. Use Corinth altimeter setting, when not received use Tupelo altimeter setting and increase all DA 4 feet, and all MDA 20 feet. Rwy 15 helicopter visibility reduction below 3/4 SM NA.</p>		
CRX AWOS-3PT <b>118.675</b>	MEMPHIS CENTER <b>135.9 273.55</b>	UNICOM <b>122.8 (CTAF) 0</b>



SC-4, 22 FEB 2024 to 21 MAR 2024

SC-4, 22 FEB 2024 to 21 MAR 2024

ELEV 392	TDZE 392
----------	----------



CATEGORY	A	B	C	D
LPV DA		777-1¼	385 (400-1¼)	
LNAV/VNAV DA		842-1½	450 (500-1½)	
LNAV MDA		880-1 488 (500-1)	880-1¾ 488 (500-1¾)	

MIRL Rwy 15-33 0  
REIL Rwy 15 and 33

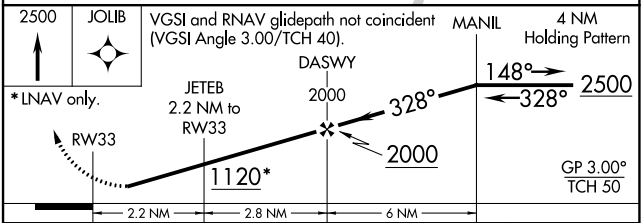
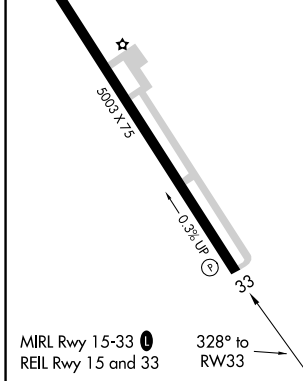
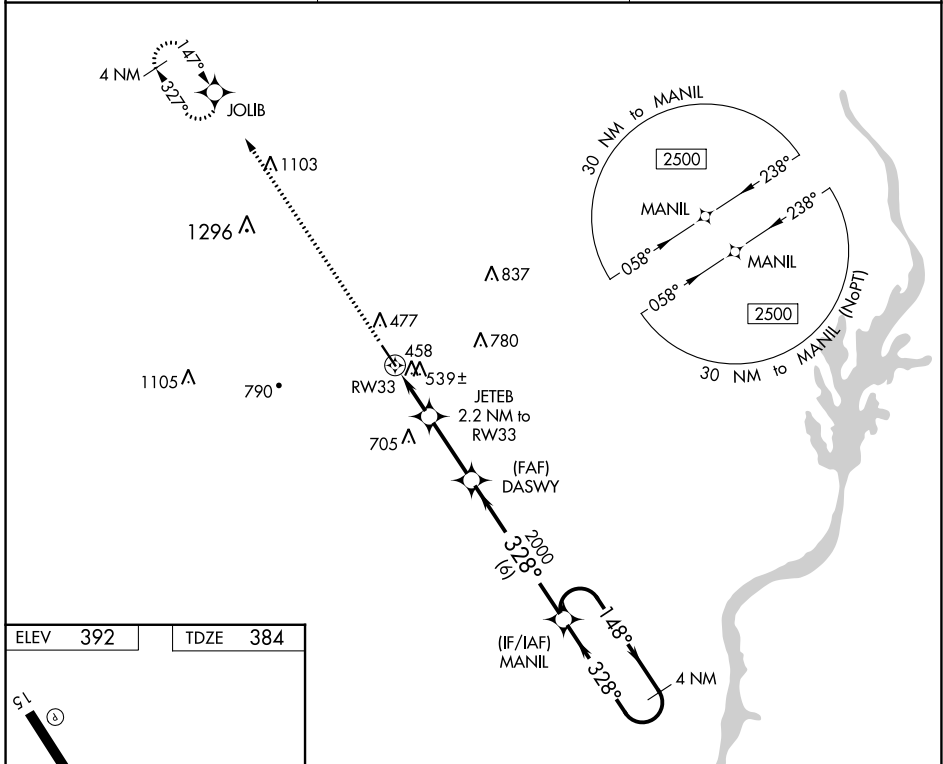
WAAS CH <b>87134</b> <b>W33A</b>	APP CRS <b>328°</b>	Rwy Idg TDZE Apt Elev	<b>5003</b> <b>384</b> <b>392</b>
--	------------------------	-----------------------------	---

# RNAV (GPS) RWY 33

BOONEVILLE/BALDWIN (8M1)

RNP APCH.	Baro-VNAV NA. Use Corinth altimeter setting, when not received, use Tupelo altimeter setting. Rwy 33 helicopter visibility reduction below 3/4 SM NA.	MISSED APPROACH: Climb to 2500 direct JOLIB and hold.
-----------	---	---

CRX AWOS-3PT <b>118.675</b>	MEMPHIS CENTER <b>135.9 273.55</b>	UNICOM <b>122.8 (CTAF) 0</b>
--------------------------------	---------------------------------------	---------------------------------



CATEGORY	A	B	C	D
LPV DA	688-1 304 (300-1)			
LNAV/VNAV DA	783-1 3/8 399 (400-1 3/8)			
LNAV MDA	860-1 476 (500-1)		860-1 3/8 476 (500-1 3/8)	

SC-4, 22 FEB 2024 to 21 MAR 2024

SC-4, 22 FEB 2024 to 21 MAR 2024

VOR/DME OTB <b>109.8</b> Chan <b>35</b>	APP CRS <b>015°</b>	Rwy Idg TDZE Apt Elev	<b>N/A</b> <b>N/A</b> <b>392</b>
---	------------------------	-----------------------------	--

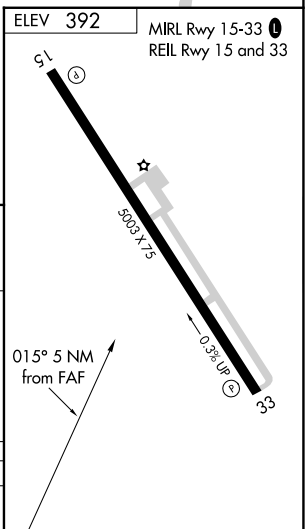
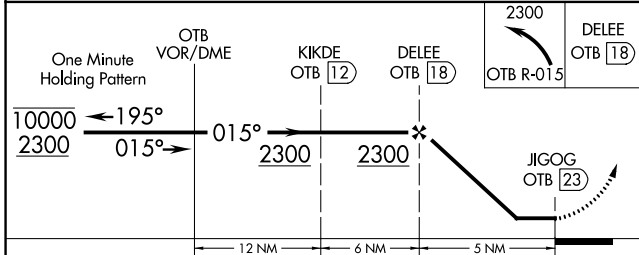
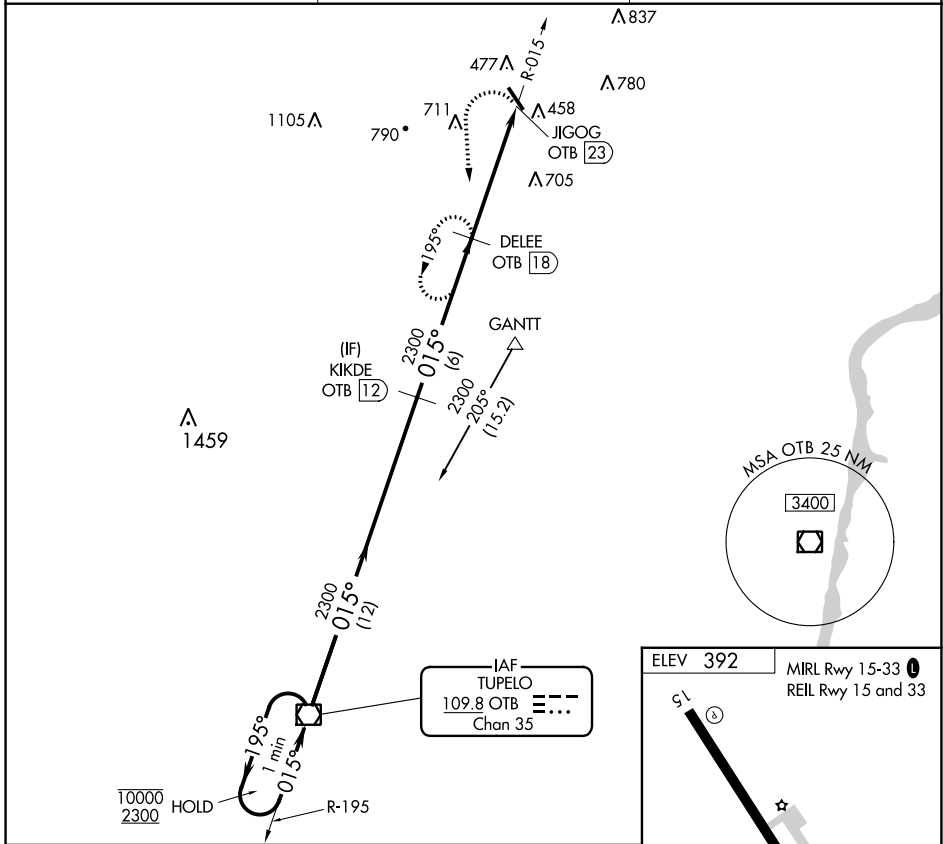
**VOR-A**  
BOONEVILLE/BALDWIN (8M1)

DME required. RNAV 1-GPS or RADAR required for procedure entry.

▼ Use Corinth altimeter setting, when not received, use Tupelo altimeter setting and  
▲ NA increase all MDA 20 feet.

MISSED APPROACH: Climbing left turn to 2300 on OTB VOR/DME R-015 to DELEE/OTB 18 DME and hold.

CRX AWOS-3PT <b>118.675</b>	MEMPHIS CENTER <b>135.9 273.55</b>	UNICOM <b>122.8 (CTAF) 0</b>
--------------------------------	---------------------------------------	---------------------------------



CATEGORY	A	B	C	D
CIRCLING	1120-1 728 (800-1)	1120-1¼ 728 (800-1¼)	1180-2¼ 788 (800-2¼)	1340-3 948 (1000-3)

SC-4, 22 FEB 2024 to 21 MAR 2024

SC-4, 22 FEB 2024 to 21 MAR 2024