

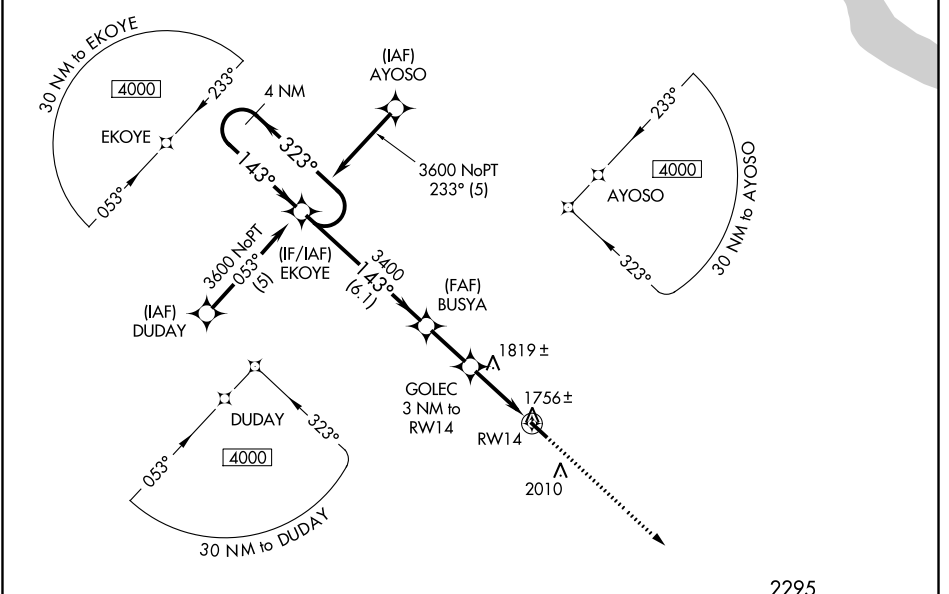
WAAS CH 66019 W14A	APP CRS 143°	Rwy Idg TDZE Apt Elev	4101 1746 1766
--	------------------------	-----------------------------	---

RNAV (GPS) RWY 14

CORRY-LAWRENCE (8G2)

RNP APCH.	MISSED APPROACH: Climb to 3600 direct CUXOM and hold.
▽ Baro-VNAV NA. Rwy 14 helicopter visibility reduction below ¼ SM NA. ▲ NA Use Jamestown NY altimeter setting; when not received, use Meadville altimeter setting and increase all DA 65 feet and all MDA 80 feet; increase LPV all Cats and LNAV Cat C visibility ¼ SM.	

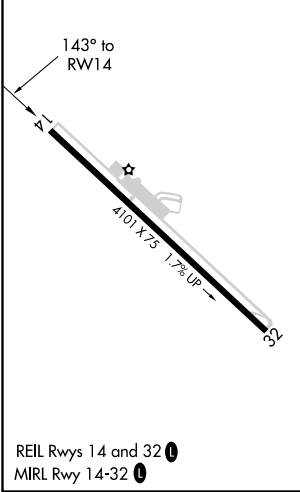
JHW AWOS-3PT 118.425	BUFFALO APP CON * 121.0 257.8	UNICOM 122.8 (CTAF) 0
--------------------------------	---	---------------------------------



NE-4, 10 SEP 2020 to 08 OCT 2020

NE-4, 10 SEP 2020 to 08 OCT 2020

ELEV 1766	TDZE 1746
-----------	-----------



REIL Rws 14 and 32
MIRL Rwy 14-32

4 NM Holding Pattern EKOYE		*LNAV only	3600	CUXOM
GP 3.00° TCH 40 3600 ← 323° → 143° → 143° → 3400		BUSYA	3400	GOLEC 3 NM to RWY14
6.1 NM (EKOYE to BUSYA)		2.2 NM (BUSYA to GOLEC)	3 NM (GOLEC to RWY14)	RWY14 *2700
CATEGORY	A	B	C	D
LPV DA	2054-1¼	308 (300-1¼)		NA
LNAV/VNAV DA	2084-1½	338 (400-1½)		NA
LNAV MDA	2140-1	394 (400-1)		NA

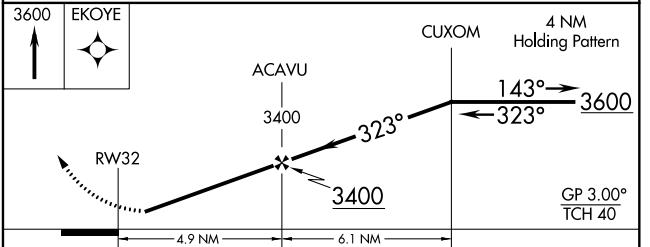
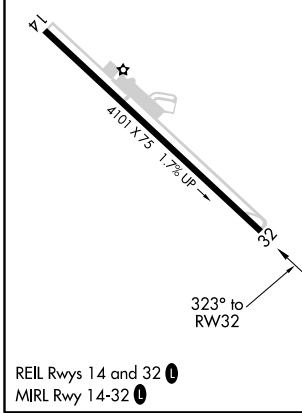
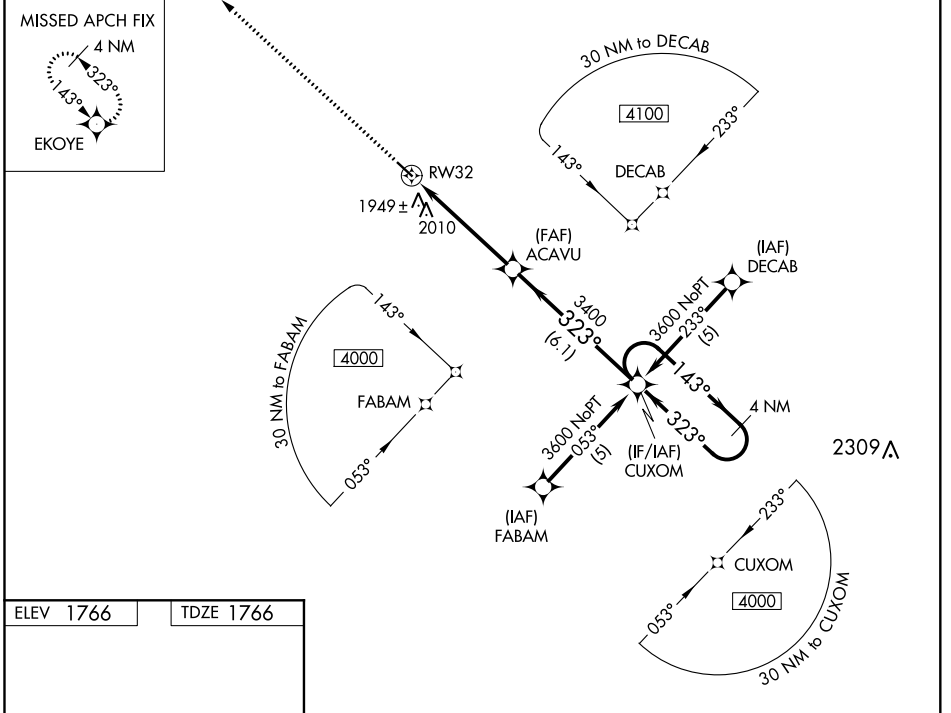
WAAS CH 70719 W32A	APP CRS 323°	Rwy Idg 4101 TDZE 1766 Apt Elev 1766
--	------------------------	---

RNAV (GPS) RWY 32

CORRY-LAWRENCE (8G2)

RNP APCH.	MISSED APPROACH: Climb to 3600 direct EKOYE and hold.
<p>▼ Baro-VNAV NA. Rwy 32 helicopter visibility reduction below ¾ SM NA.</p> <p>▲ NA Use Jamestown NY altimeter setting; when not received, use Meadville altimeter setting and increase all DA 65 feet and all MDA 80 feet; increase LPV all Cats, LNAV/VNAV all Cats and LNAV Cat C visibility ¼ SM.</p>	

JHW AWOS-3PT 118.425	BUFFALO APP CON * 121.0 257.8	UNICOM 122.8 (CTAF) 0
--------------------------------	---	---------------------------------



CATEGORY	A	B	C	D
LPV DA	2074-1 308 (400-1)			NA
LNAV/VNAV DA	2324-2 558 (600-2)			NA
LNAV MDA	2340-1 574 (600-1)		2340-1½ 574 (600-1½)	NA

NE-4, 10 SEP 2020 to 08 OCT 2020

NE-4, 10 SEP 2020 to 08 OCT 2020