

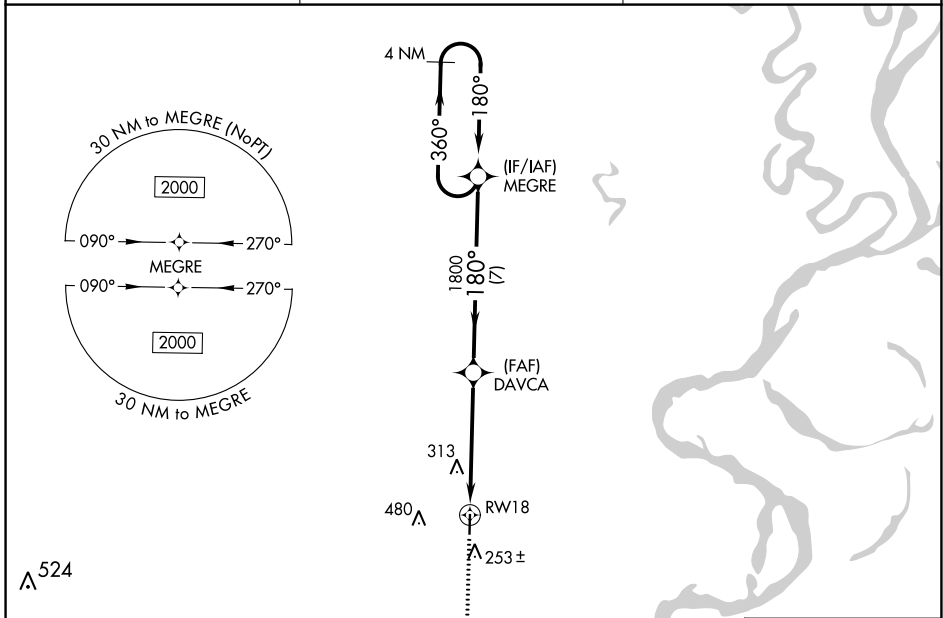
WAAS CH <b>86425</b> <b>W18A</b>	APP CRS <b>180°</b>	Rwy Idg TDZE <b>141</b> Apt Elev <b>141</b>	<b>4007</b>
--	------------------------	---	-------------

# RNAV (GPS) RWY 18

MC GEHEE MUNI (7M1)

RNP APCH.	MISSED APPROACH: Climb to 2000 direct ADUCA and hold.
<p>▼ NA</p> <p>Rwy 18 helicopter visibility reduction below 3/4 SM NA. Use Greenville, MS altimeter setting, when not received use Monticello altimeter.</p>	

GLH ASOS <b>125.525</b>	MEMPHIS CENTER <b>135.875 269.35</b>	CTAF <b>122.9</b>
----------------------------	---	----------------------



SC-1, 22 FEB 2024 to 21 MAR 2024

SC-1, 22 FEB 2024 to 21 MAR 2024

