

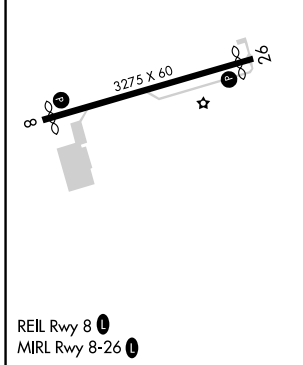
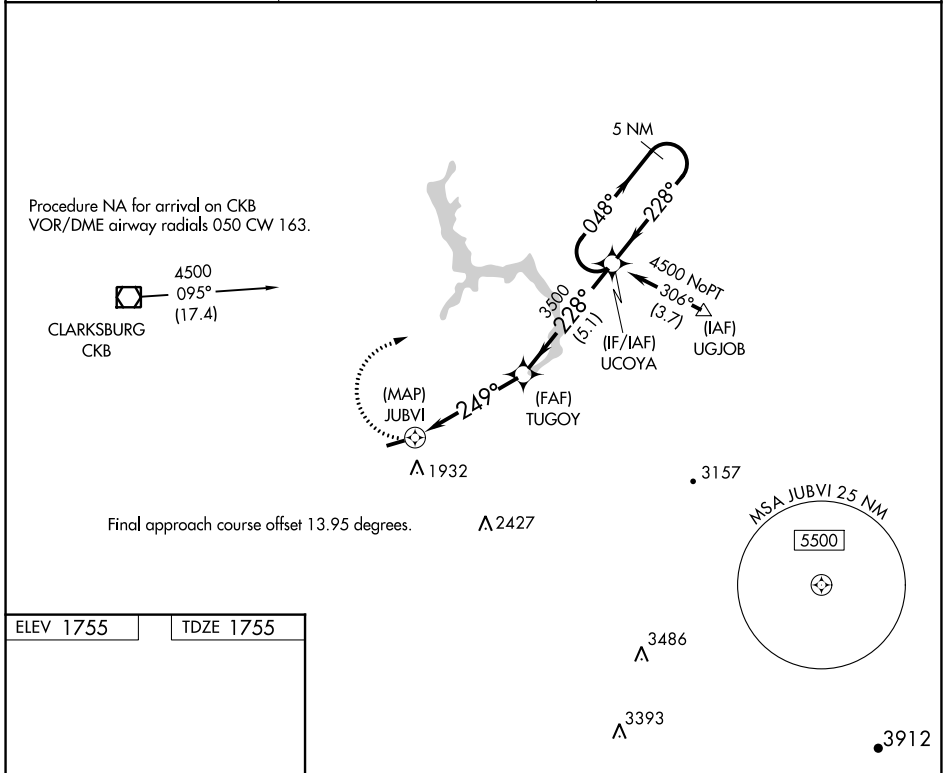
APP CRS 249°	Rwy ldg TDZE Apt Elev	3050 1755 1755
------------------------	-----------------------------	---

RNAV (GPS) RWY 26

PHILIPPI/BARBOUR COUNTY RGNL (79D)

<p>▼ Rwy 26 helicopter visibility reduction below 1 SM NA. DME/DME RNP-0.3 NA. Procedure NA at night.</p> <p>▲ NA Use Clarksburg altimeter setting, when not received, use Buckhannon altimeter setting.</p>	<p>MISSED APPROACH: Climbing right turn to 4500 direct UCOYA and hold.</p>
--	--

CKB ASOS 127.825	CLARKSBURG APP CON ★ 121.15 284.65	CTAF 122.9 0
----------------------------	--	------------------------



4500	UCOYA	VGSI and descent angles not coincident (VGSI Angle 3.00/TCH 20).	5 NM Holding Pattern	
CATEGORY	A	B	C	D
LNAV MDA	2460-1	705 (800-1)	NA	
CIRCLING	2520-1 765 (800-1)	2520-1¼ 765 (800-1¼)	NA	

NE-4, 27 JAN 2022 to 24 FEB 2022

NE-4, 27 JAN 2022 to 24 FEB 2022