

RAEFORD, NORTH CAROLINA

AL-6439 (FAA)

23110

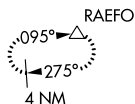
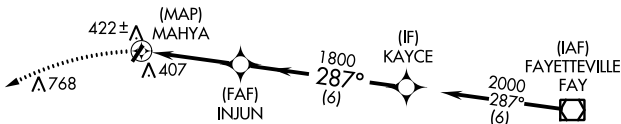
APP CRS **287°**
 Rwy Idg **N/A**
 TDZE **N/A**
 Apt Elev **304**

RNAV (GPS)-A
 P K AIRPARK (5W4)

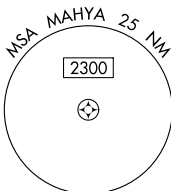
DME/DME RNP-0.3 NA. Procedure NA at night. Use Fayetteville altimeter setting.	MISSED APPROACH: Climbing left turn to 3000 direct RAEFO and hold.
FAYETTEVILLE APP CON 127.8 290.25	UNICOM 123.0 (CTAF)

SE-2, 22 FEB 2024 to 21 MAR 2024

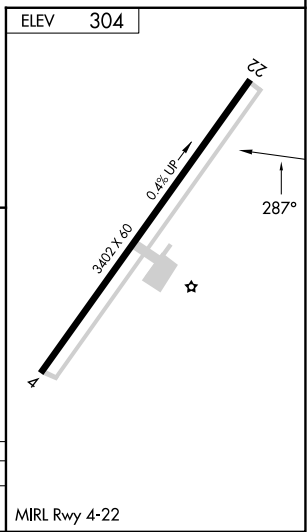
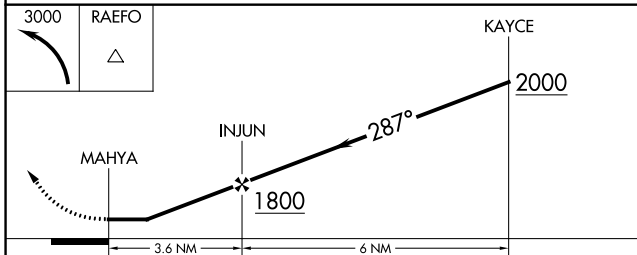
SE-2, 22 FEB 2024 to 21 MAR 2024



Procedure NA for arrival on FAY VOR/DME airway radials 225 CW 009.



1249 A



CATEGORY	A	B	C	D
CIRCLING	840-1 536 (600-1)	860-1 556 (600-1)	920-1¾ 616 (700-1¾)	NA

MIRL Rwy 4-22

RAEFORD, NORTH CAROLINA
 Orig 01FEB18

35°01'N-79°11'W

P K AIRPARK (5W4)
RNAV (GPS)-A

RAEFORD, NORTH CAROLINA

AL-6439 (FAA)

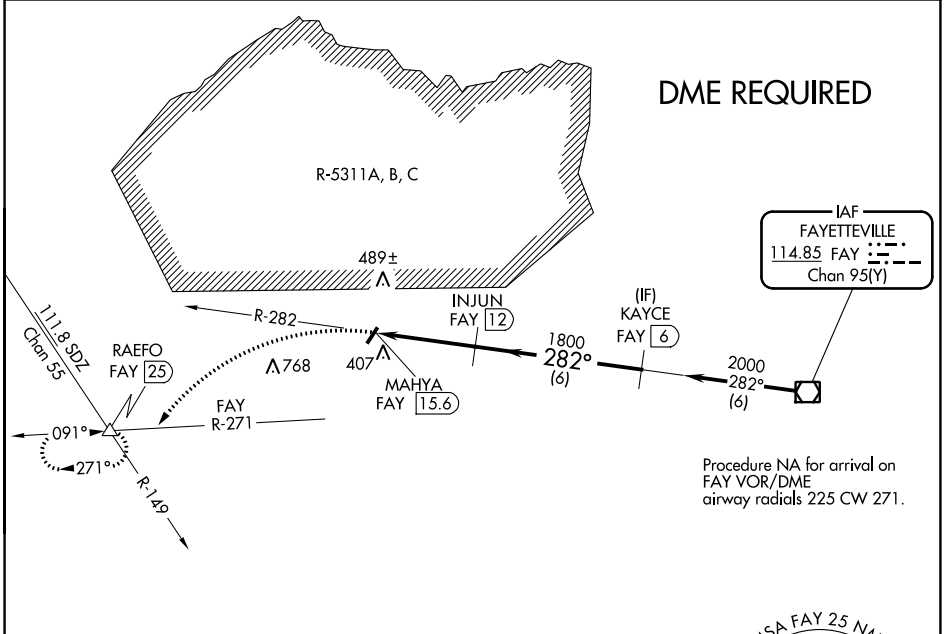
23110

VOR/DME FAY 114.85 Chan 95(Y)	APP CRS 282°	Rwy Idg TDZE Apt Elev N/A N/A 304
---	------------------------	---

VOR-A

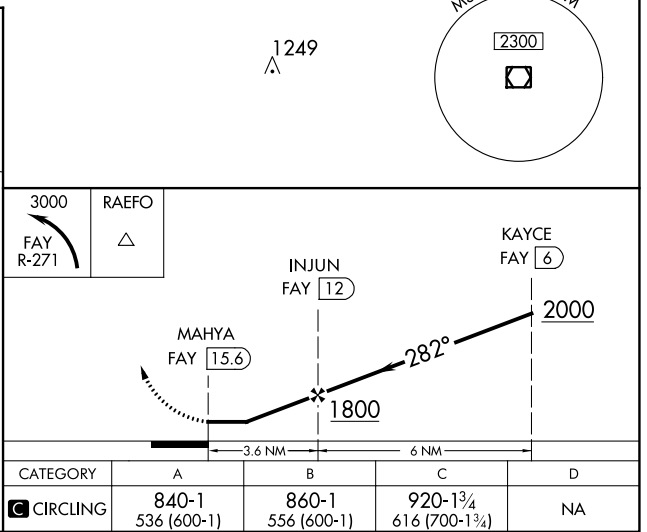
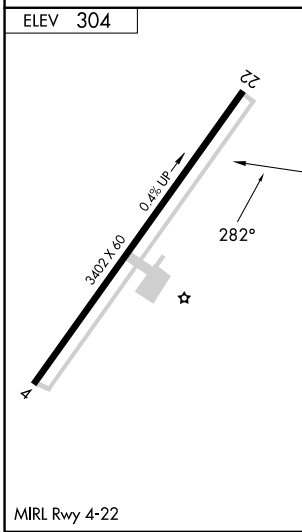
P K AIRPARK (5W4)

▼ ▲ NA	DME required. Procedure NA at night. Use Fayetteville altimeter setting.	MISSED APPROACH: Climbing left turn to 3000 on FAY VOR/DME R-271 to RAEFO/FAY 25 DME and hold.
FAYETTEVILLE APP CON 127.8 290.25		UNICOM 123.0 (CTAF)



SE-2, 22 FEB 2024 to 21 MAR 2024

SE-2, 22 FEB 2024 to 21 MAR 2024



RAEFORD, NORTH CAROLINA
Amdt 4 01FEB18

35°01'N-79°11'W

P K AIRPARK (5W4)
VOR-A