

APP CRS 333°	Rwy Idg TDZE Apt Elev	NA NA 106
------------------------	-----------------------------	--------------------------------------

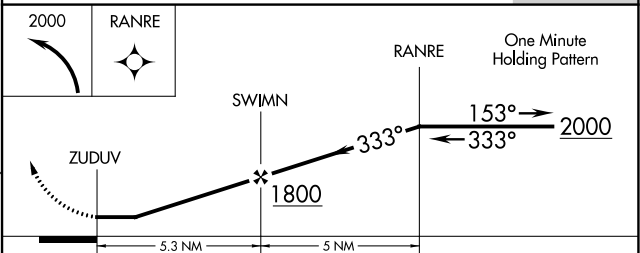
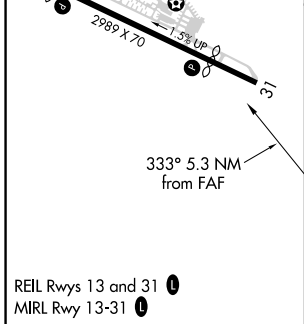
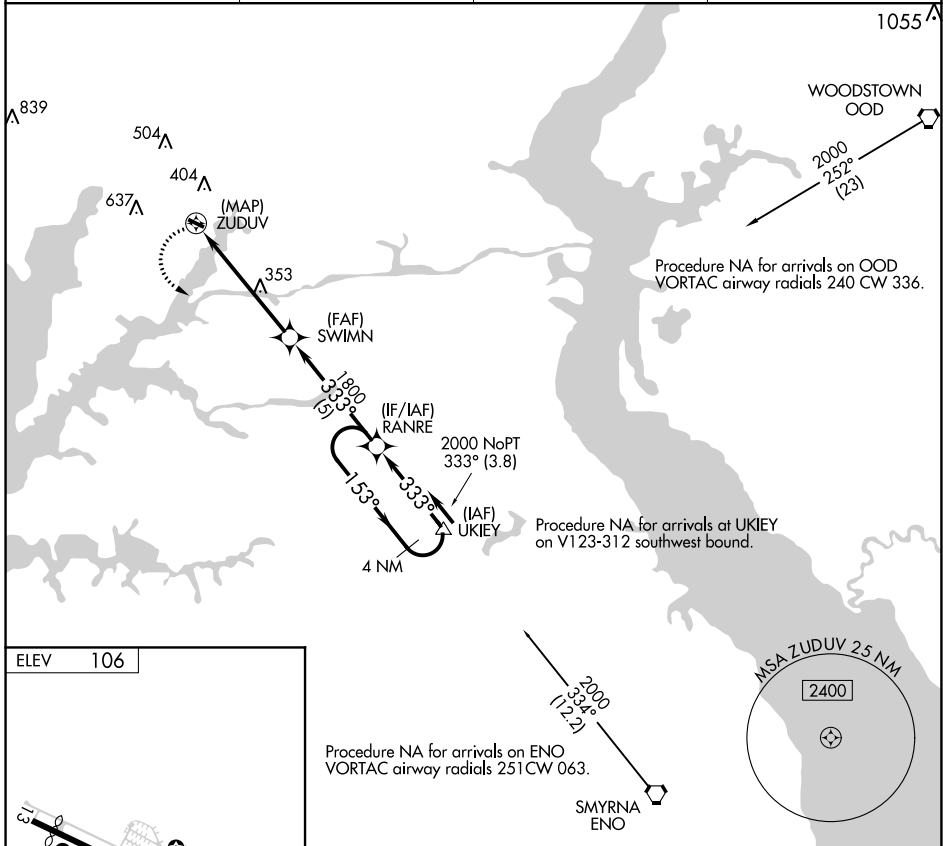
RNAV (GPS)-B

CLAREMONT (58M)

NA DME/DME RNP-0.3 NA. Procedure NA at night. Helicopter visibility reduction below 1 SM NA. Use Middletown, DE altimeter setting; when not received use Wilmington, DE altimeter setting and increase all MDA 20 feet.

MISSED APPROACH: Climbing left turn to 2000 direct RANRE and hold.

EVY AWOS-3 132.325	PHILADELPHIA APP CON 118.35 323.1	UNICOM 122.8 (CTAF)	123.0
------------------------------	---	-------------------------------	--------------



CATEGORY	A	B	C	D
CIRCLING	760-1 654 (700-1)	800-1 694 (700-1)	NA	

NE-3, 22 APR 2021 to 20 MAY 2021

NE-3, 22 APR 2021 to 20 MAY 2021

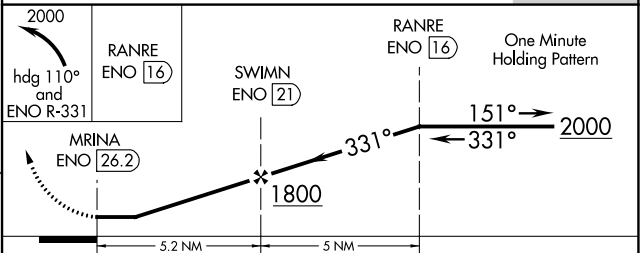
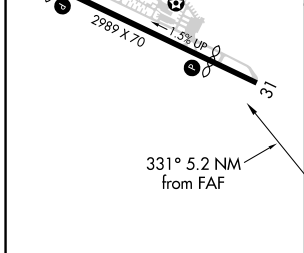
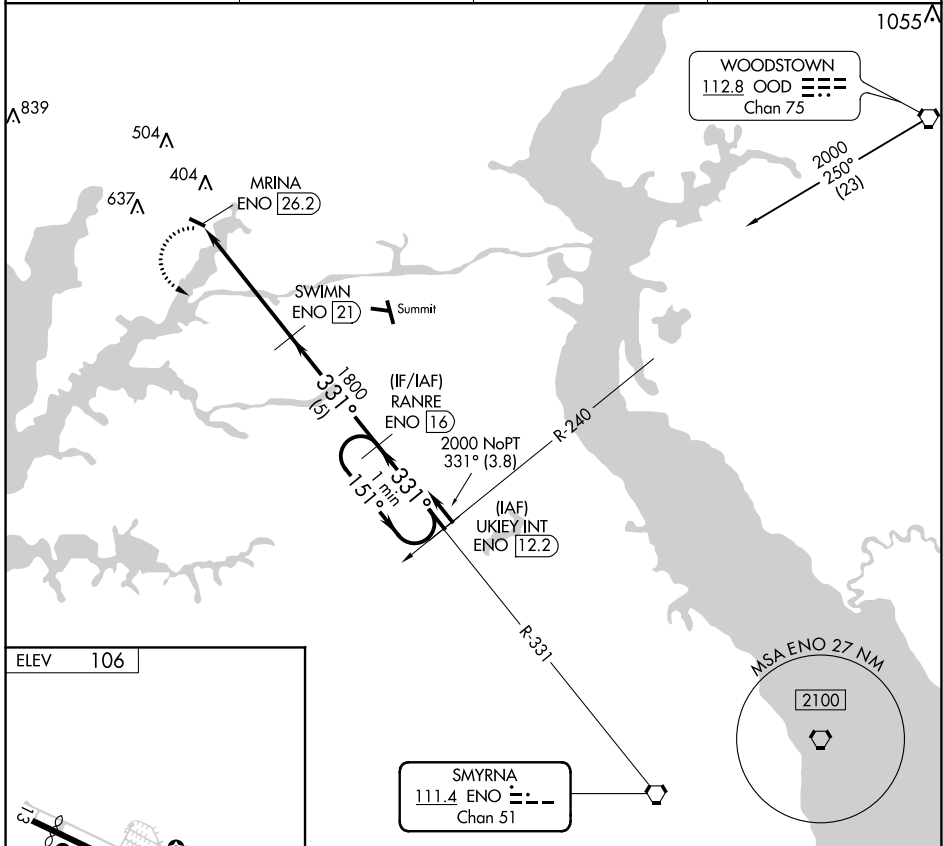
VORTAC ENO 111.4 Chan 51	APP CRS 331°	Rwy Idg TDZE Apt Elev	NA NA 106
--	------------------------	-----------------------------	--------------------------------------

VOR/DME-A

CLAREMONT (58M)

<p>NA</p> <p>Use Middletown, DE altimeter setting; when not received, use Wilmington, DE altimeter setting. Helicopter visibility reduction below 1 SM NA. Procedure NA at night.</p>	<p>MISSED APPROACH: Climbing left turn to 2000 on heading 110° and ENO R-331 to RANRE/ENO 16 DME and hold.</p>
--	--

EYV AWOS-3 132.325	PHILADELPHIA APP CON 118.35 323.1	UNICOM 122.8 (CTAF)	123.0
------------------------------	---	-------------------------------	--------------



REIL Rwys 13 and 31	MIRL Rwy 13-31	<table border="1"> <tr> <td>CATEGORY</td> <td>A</td> <td>B</td> <td>C</td> <td>D</td> </tr> <tr> <td>CIRCLING</td> <td>940-1¼</td> <td>834 (900-1¼)</td> <td colspan="2">NA</td> </tr> </table>	CATEGORY	A	B	C	D	CIRCLING	940-1¼	834 (900-1¼)	NA	
CATEGORY	A	B	C	D								
CIRCLING	940-1¼	834 (900-1¼)	NA									

NE-3, 22 APR 2021 to 20 MAY 2021

NE-3, 22 APR 2021 to 20 MAY 2021