

WAAS CH 73023 W26A	APP CRS 261°	Rwy ldg TDZE Apt Elev	3900 860 860
--	------------------------	-----------------------------	---

RNAV (GPS) RWY 26

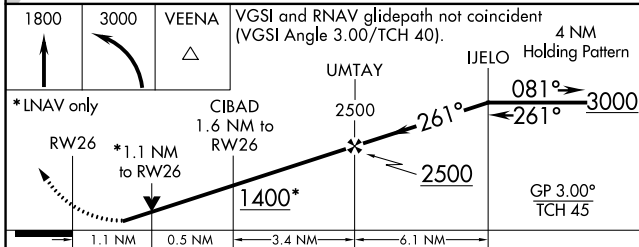
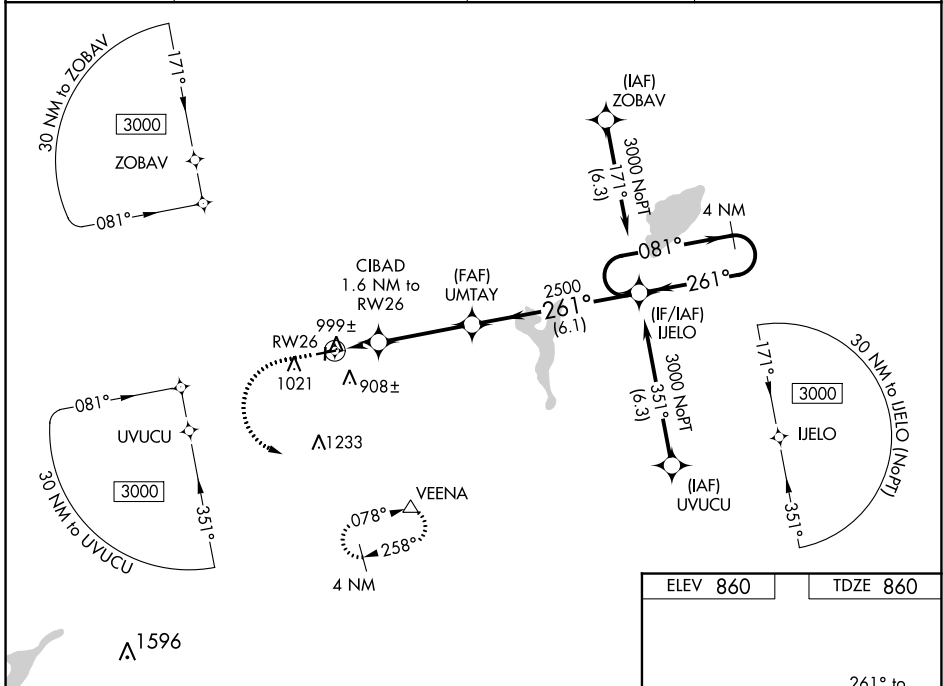
EAST TROY MUNI (57C)

RNP APCH.

▼ For uncompensated Baro-VNAV systems, LNAV/VNAV NA below -16°C (4°F) or above 54°C (130°F). Obtain local altimeter setting on CTAF; when not received, use General Mitchell Intl altimeter setting and increase all DA 72 feet and all MDA 80 feet, increase LNAV/VNAV visibility all Cats ¼ mile. Rwy 26 helicopter visibility reduction below ¾ SM NA. Baro-VNAV and VDP NA when using General Mitchell Intl altimeter setting.

MISSED APPROACH: Climb to 1800 then climbing left turn to 3000 direct VEENA and hold.

AWOS-3PT 118.125	MILWAUKEE APP CON 125.35 307.0	GCO 121.725	UNICOM 123.0 (CTAF) 0
----------------------------	--	-----------------------	---------------------------------



ELEV 860	TDZE 860
----------	----------

MIRL Rwy 8-26 0
REIL Rws 8 and 26 0

CATEGORY	A	B	C	D
LPV DA	1110-1	250 (300-1)		NA
LNAV/VNAV DA	1161-1	301 (400-1)		NA
LNAV MDA	1260-1	400 (500-1)		NA

EC-3, 02 DEC 2021 to 30 DEC 2021

EC-3, 02 DEC 2021 to 30 DEC 2021

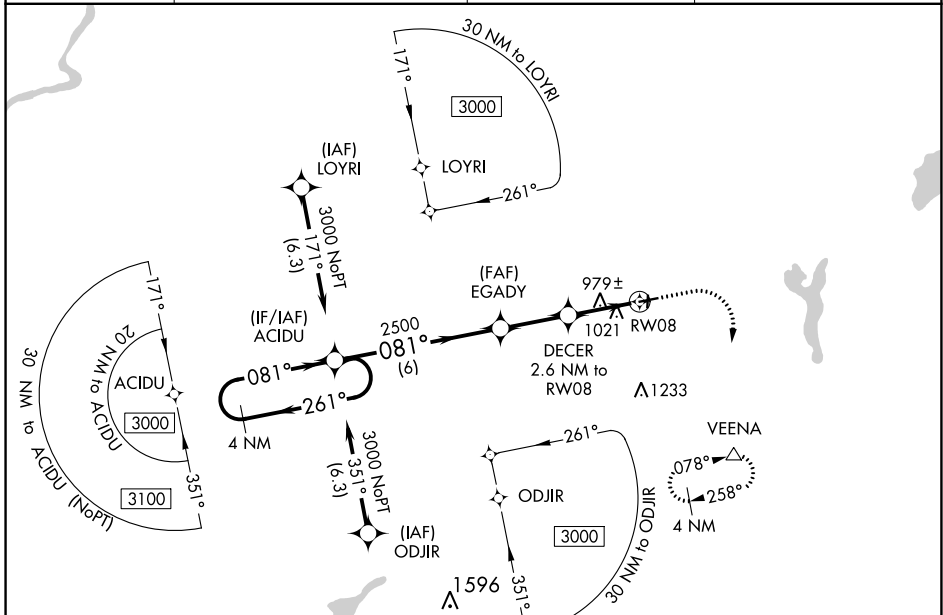
WAAS CH 78423 W08A	APP CRS 081°	Rwy Idg TDZE Apt Elev	3900 851 860
--	------------------------	-----------------------------	---

RNAV (GPS) RWY 8

EAST TROY MUNI (57C)

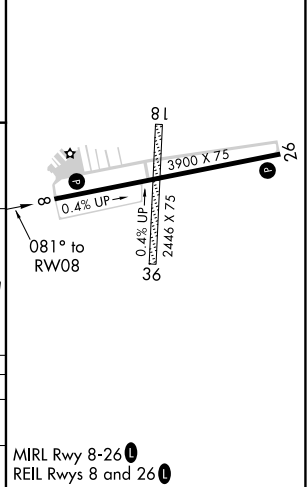
RNP APCH. ▼ Obtain local altimeter setting on CTAF; when not received use General Mitchell Intl altimeter setting and increase all MDA 80 feet. Rwy 8 helicopter visibility reduction below 3/4 SM NA. VDP NA when using General Mitchell Intl altimeter setting.	MISSED APPROACH: Climb to 2400 then climbing right turn to 3000 direct VEENA and hold.
--	--

AWOS-3PT 118.125	MILWAUKEE APP CON 125.35 307.0	GCO 121.725	UNICOM 123.0 (CTAF) 0
----------------------------	--	-----------------------	--



ELEV 860	TDZE 851
----------	----------

	ACIDU	EGADY	DECER	VEENA
	4 NM Holding Pattern	3.00° TCH 43	2.6 NM to RW08	1.1 NM to RW08
	3000	2500	1700	
	6 NM	2.5 NM	1.5 NM	1.1 NM
CATEGORY	A	B	C	D
LP MDA	1240-1	389 (400-1)		NA
LNAV MDA	1280-1	429 (500-1)		NA



EC-3, 02 DEC 2021 to 30 DEC 2021

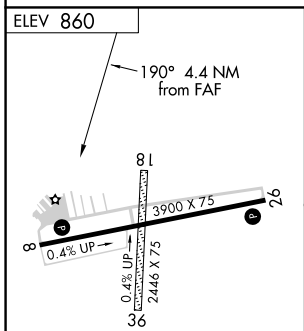
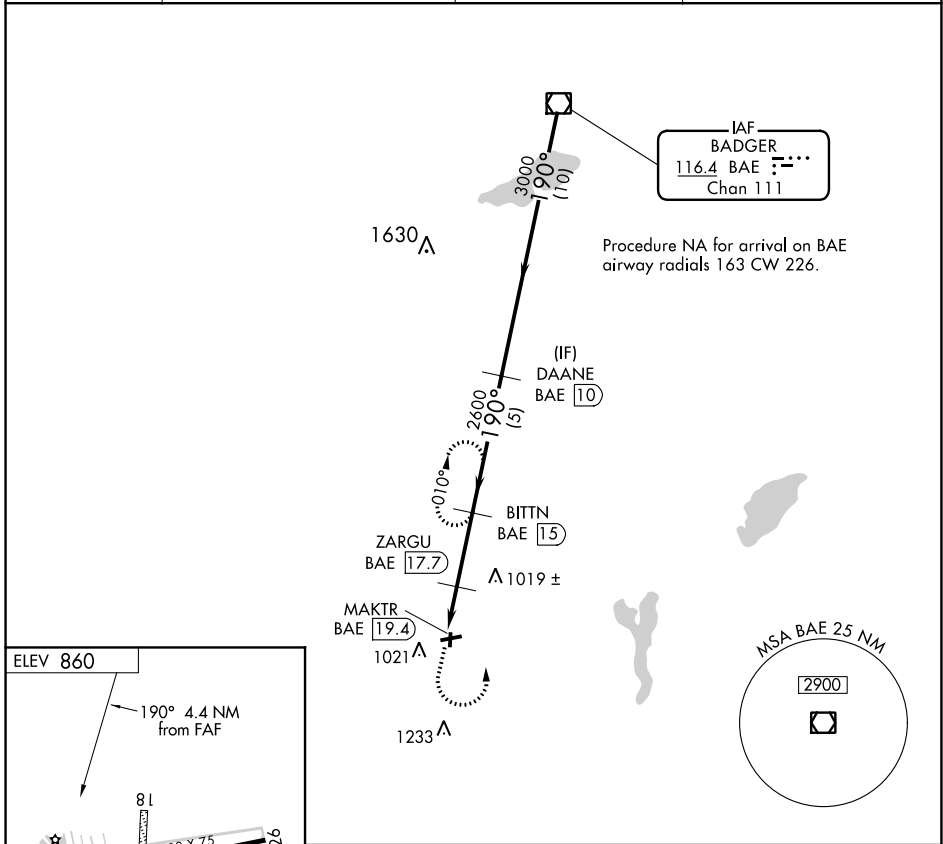
EC-3, 02 DEC 2021 to 30 DEC 2021

VOR/DME BAE 116.4 Chan 111	APP CRS 190°	Rwy Idg TDZE Apt Elev	N/A N/A 860
--	------------------------	-----------------------------	--

VOR/DME-A
EAST TROY MUNI (57C)

<p>◀ Circling NA to Rwys 18 and 36.</p>		<p>MISSED APPROACH: Climb to 2700 then left turn on BAE VOR/DME R-190 to BITTN/15 DME and hold.</p>	
---	--	---	--

AWOS-3PT 118,125	MILWAUKEE APP CON 125.35 307.0	GCO 121.725	UNICOM 123.0 (CTAF) 0
----------------------------	--	-----------------------	--



<p>2700</p> <p>BAE R-190</p>	<p>BITTN BAE (15)</p>	<p>DAANE BAE (10)</p>	<p>BAE VOR/DME</p>	3000
				3000
<p>MAKTR BAE (19.4)</p>	<p>ZARGU BAE (17.7)</p>	<p>BITTN BAE (15)</p>	<p>1800</p>	2600
				2600
<p>1.7 NM</p>		<p>2.7 NM</p>		5 NM
<p>10 NM</p>		<p>10 NM</p>		
CATEGORY	A	B	C	D
CIRCLING	1340-1	480 (500-1)	NA	

MIRL Rwy 8-26 **0**
REIL Rws 8 and 26 **0**

EC-3, 02 DEC 2021 to 30 DEC 2021

EC-3, 02 DEC 2021 to 30 DEC 2021