

WAAS CH <b>97725</b> <b>W27A</b>	APP CRS <b>274°</b>	Rwy Idg TDZE Apt Elev	<b>3541</b> <b>288</b> <b>289</b>
--	------------------------	-----------------------------	---

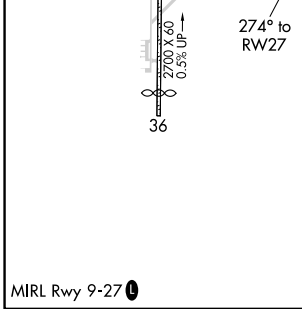
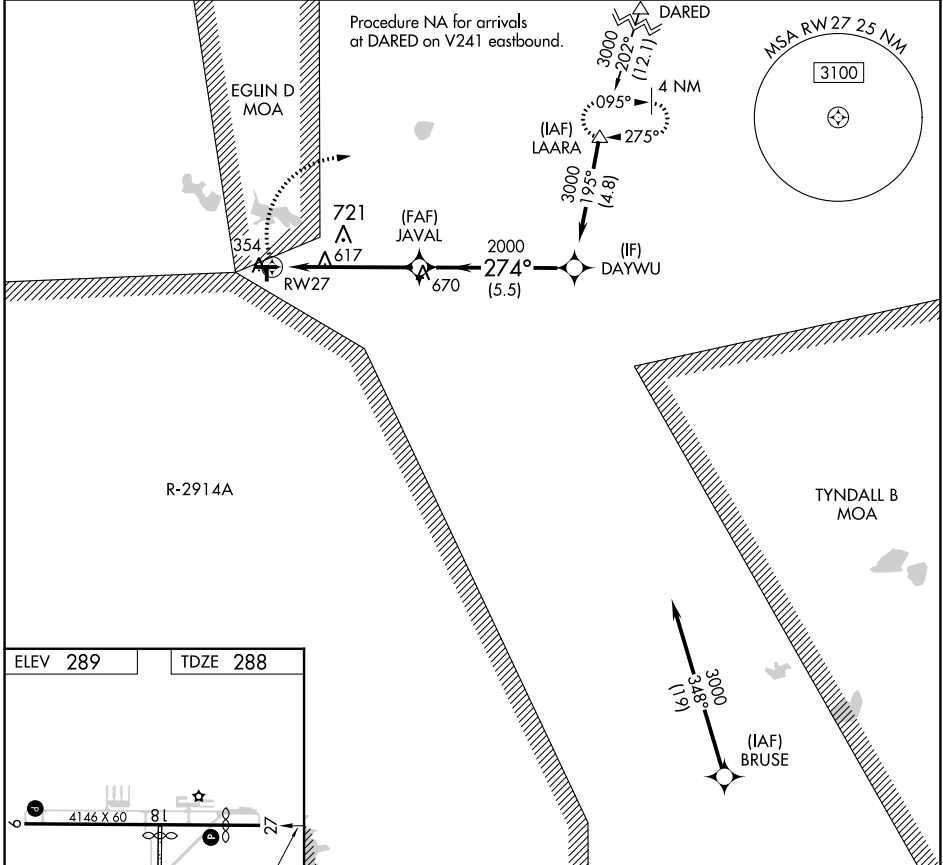
# RNAV (GPS) RWY 27

DEFUNIAK SPRINGS (54J)

RNP APCH.  
 ⚠ Circling NA to Rwy 18 and 36. Circling Rwy 9 NA at night.  
 ⚠ Rwy 27 helicopter visibility reduction below 3/4 SM NA.

MISSED APPROACH: Climbing right turn to 3000  
 direct LAARA and hold.

AWOS-3P <b>118.725</b>	EGLIN APP CON <b>124.05 284.65</b>	UNICOM <b>123.05 (CTAF) 0</b>
---------------------------	---------------------------------------	----------------------------------



3000 LAARA	Visual Segment - Obstacles.		DAYWU
1.7 NM to RWY 27	JAVAL	2000	3000
1.7 NM	3.6 NM	5.5 NM	
CATEGORY	A	B	C
LP MDA	880-1	592 (600-1)	NA
LNAV MDA	880-1	592 (600-1)	NA
CIRCLING	880-1	920-1	NA
	591 (600-1)	631 (700-1)	

SE-3, 22 FEB 2024 to 21 MAR 2024

SE-3, 22 FEB 2024 to 21 MAR 2024

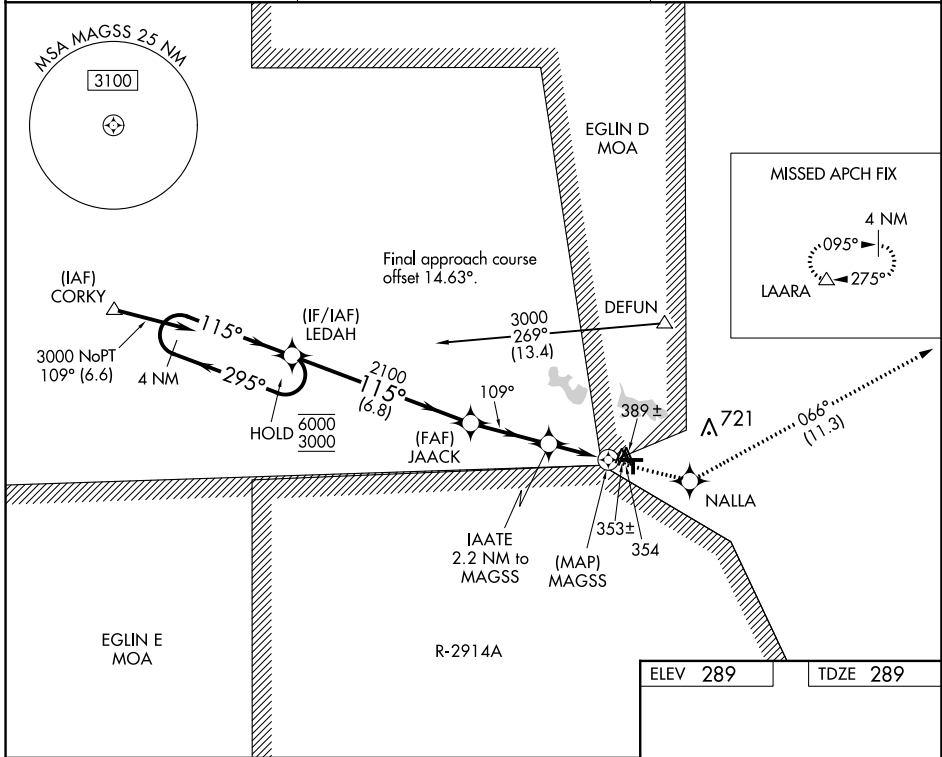
WAAS CH <b>40441</b> <b>W09A</b>	APP CRS <b>109°</b>	Rwy Idg <b>4146</b> TDZE <b>289</b> Apt Elev <b>289</b>
--	------------------------	---

# RNAV (GPS) RWY 9

DEFUNIAK SPRINGS (54J)

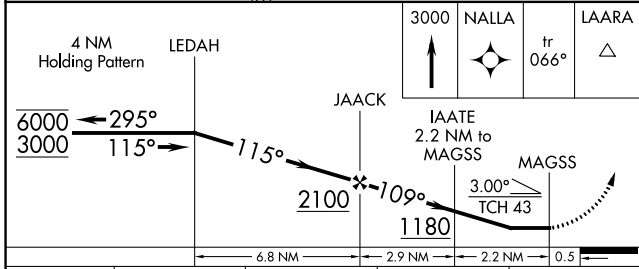
RNP APCH.	MISSED APPROACH: Climb to 3000 direct NALLA and on track 066° to LAARA and hold.
<p>Circling NA to Rwys 18 and 36. Rwy 9 helicopter visibility reduction below 1 SM NA. Straight-in, Circling Rwy 9 NA at night.</p>	

AWOS-3P <b>118.725</b>	EGLIN APP CON <b>124.05 284.65</b>	UNICOM <b>123.05 (CTAF) 0</b>
---------------------------	---------------------------------------	----------------------------------

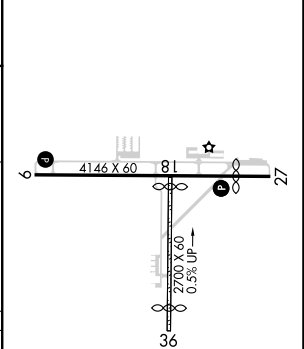


SE-3, 22 FEB 2024 to 21 MAR 2024

SE-3, 22 FEB 2024 to 21 MAR 2024



ELEV 289	TDZE 289
----------	----------



CATEGORY	A	B	C	D
LP MDA	620-1	331 (400-1)		NA
LNAV MDA	640-1	351 (400-1)		NA
CIRCLING	700-1 411 (500-1)	920-1 631 (700-1)		NA

MIRL Rwy 9-27 0