

APP CRS 127°	Rwy Idg 3600
	TDZE 1545
	Apt Elev 1545

RNAV (GPS) RWY 12

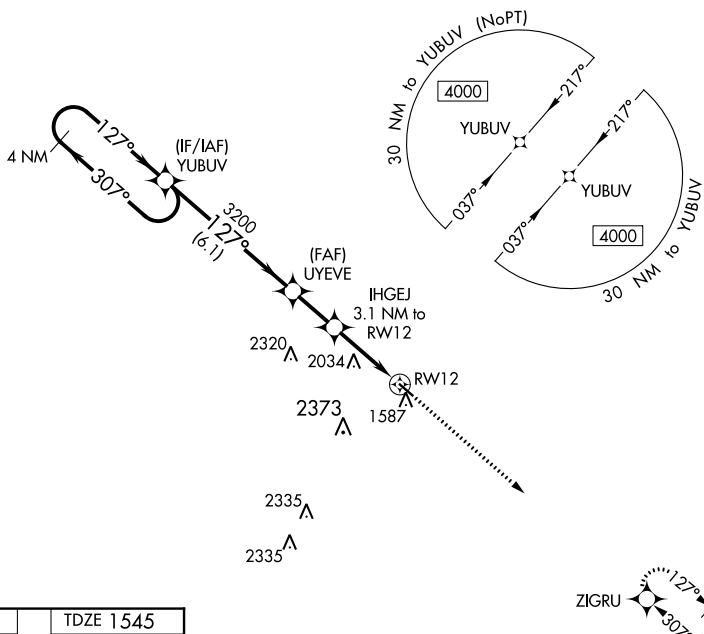
WESSINGTON SPRINGS (4X4)

NA DME/DME RNP-0.3 NA. When local altimeter setting not received use Mitchell altimeter setting: increase all MDA 100 feet, LNAV visibility Cat C ½ SM and Circling visibility Cat A ¼ SM.

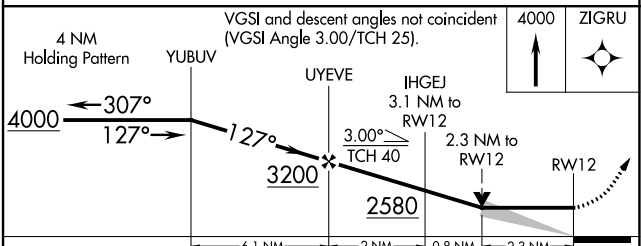
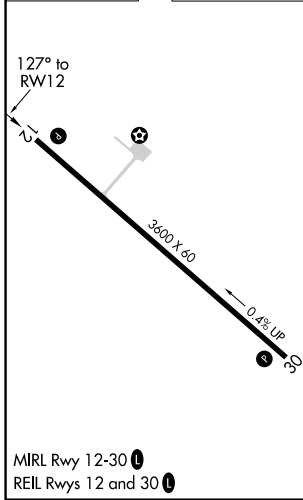
MISSED APPROACH: Climb to 4000 direct ZIGRU and hold.

MINNEAPOLIS CENTER
126.25 339.8

CTAF
122.90



ELEV 1545	TDZE 1545
-----------	-----------



CATEGORY	A	B	C	D
LNAV MDA	2300-1 755 (800-1)	2300-1¼ 755 (800-1¼)	2300-2 755 (800-2)	NA
C CIRCLING	2300-1 755 (800-1)	2340-1¼ 795 (800-1¼)	2720-3 1175 (1200-3)	NA

NC-1, 22 FEB 2024 to 21 MAR 2024

NC-1, 22 FEB 2024 to 21 MAR 2024

WAAS CH 40141 W30A	APP CRS 307°	Rwy Idg TDZE 1540 Apt Elev 1545	3600
--	------------------------	---	-------------

RNAV (GPS) RWY 30

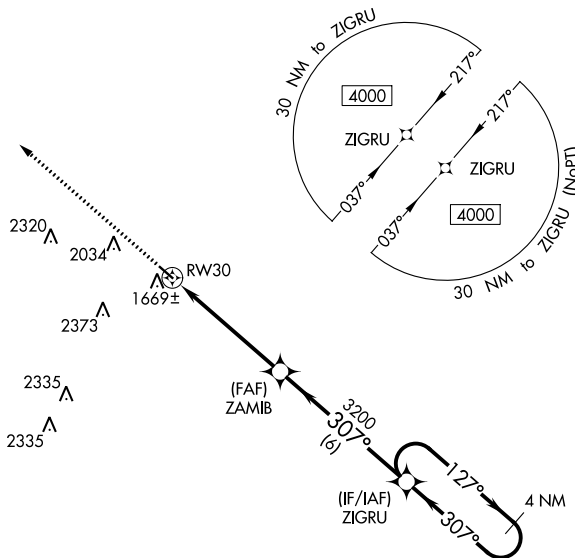
WESSINGTON SPRINGS (4X4)

⚠ DME/DME RNP-0.3 NA. VDP NA when using Mitchell Muni altimeter setting.
⚠ NA When local altimeter setting not received use Mitchell altimeter setting: increase all MDAs 100 feet and LNAV visibility Cat C ¼ SM, LP visibility Cat C ¼ SM, Circling visibility Cat B ¼ SM.

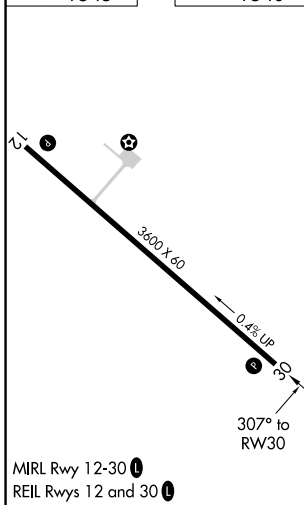
MISSED APPROACH: Climb to 4000 direct YUBUV and hold.

MINNEAPOLIS CENTER
126.25 339.8

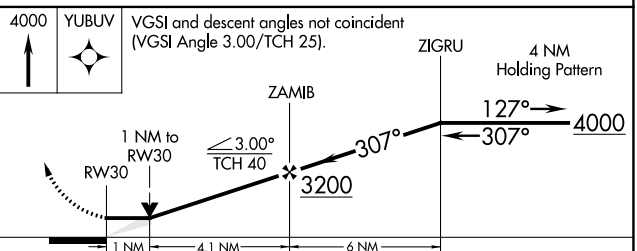
CTAF
122.90



ELEV 1545	TDZE 1540
-----------	-----------



MIRL Rwy 12-30 **Ⓛ**
 REIL Rwy 12 and 30 **Ⓛ**



CATEGORY	A	B	C	D
LP MDA	1880-1 340 (400-1)			NA
LNAV MDA	1940-1	400 (400-1)	1940-1 1/8 400 (400-1 1/8)	NA
C CIRCLING	2180-1 635 (700-1)	2340-1 795 (800-1)	2720-3 1175 (1200-3)	NA

NC-1, 22 FEB 2024 to 21 MAR 2024

NC-1, 22 FEB 2024 to 21 MAR 2024