

VORTAC GJ 115.4 Chan 101	APP CRS 046°	Rwy Idg TDZE Apt Elev	N/A N/A 750
---------------------------------------	------------------------	-----------------------------	--

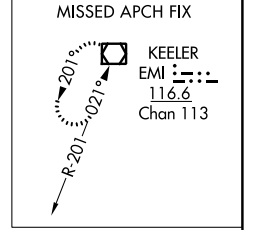
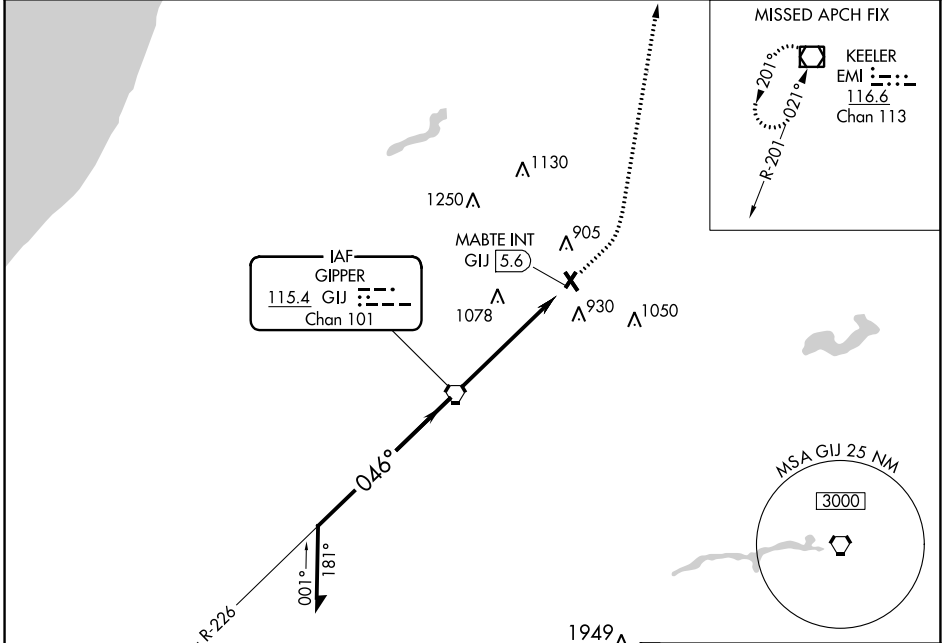
VOR-A

JERRY TYLER MEML (3TR)

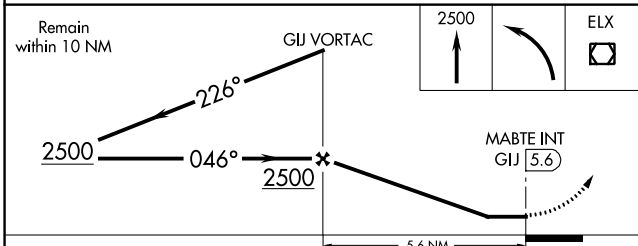
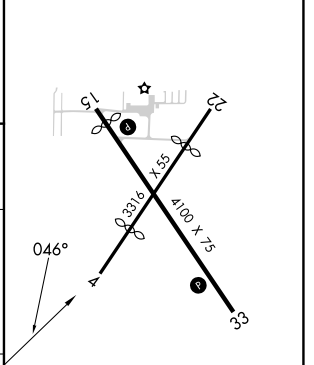
NA Use South Bend altimeter setting; when not received, use Elkhart altimeter setting and increase all MDA 20 feet. Procedure NA at night. Visibility reduction by helicopters NA.

MISSED APPROACH: Climb to 2500 then left turn direct ELX VOR/DME and hold.

SBN ASOS 120.675	SOUTH BEND APP CON * 118.55 257.8	GCO 121.725	UNICOM 122.8 (CTAF) 0
----------------------------	---	-----------------------	--



ELEV 750
MIRL Rwy 15-33 **0**
REIL Rwy 15 and 33 **0**



CATEGORY	A	B	C	D	FAF to MAP 5.6 NM					
CIRCLING	1300-1	550 (600-1)	1460-2 710 (800-2)	NA	Knots	60	90	120	150	180
					Min:Sec	5:36	3:44	2:48	2:14	1:52

VOR-A

EC-1, 22 FEB 2024 to 21 MAR 2024

EC-1, 22 FEB 2024 to 21 MAR 2024