

WAAS CH <b>90236</b> <b>W26A</b>	APP CRS <b>257°</b>	Rwy Idg TDZE Apt Elev	<b>5002</b> <b>20</b> <b>23</b>
----------------------------------------	------------------------	-----------------------------	---------------------------------------

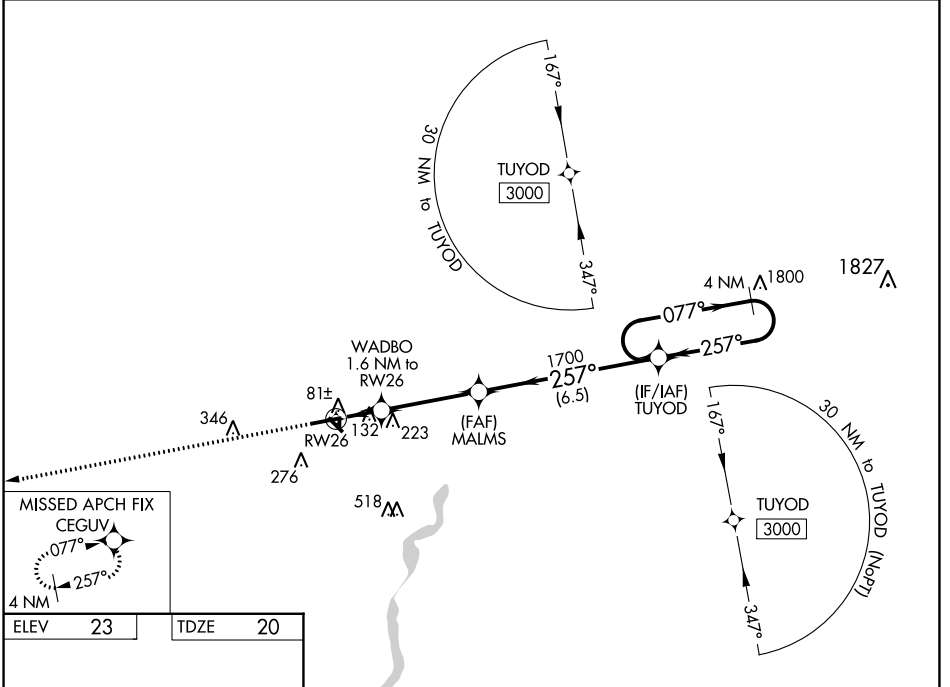
# RNAV (GPS) RWY 26

JENNINGS (3R7)

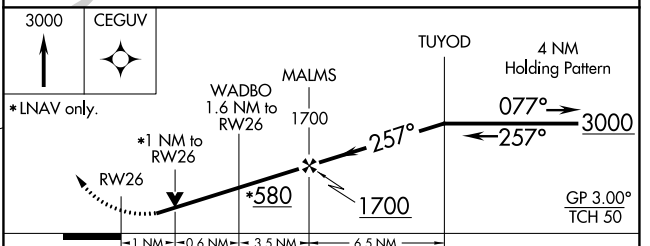
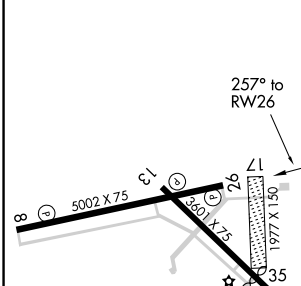
▼ For uncompensated Baro-VNAV systems, LNAV/VNAV NA below -15°C (5°F) or above 54°C (130°F).  
 ▲ DME/DME RNP-0.3 NA. Baro-VNAV and VDP NA when using Lake Charles Rgnl altimeter setting.  
 ▲ Night landing: Rwy 8, 31 NA. Helicopter visibility reduction below ¾ SM NA. When local altimeter setting not received, use Lake Charles Rgnl altimeter setting: Increase all DA 69 ft and all MDA 80 ft; increase LPV and LNAV/VNAV all Cats visibility ¼ mile, increase LNAV/Circling Cat C visibility ½ mile.

**MISSED APPROACH:**  
Climb to 3000 direct CEGUV and hold.

AWOS-3PT <b>121.150</b>	LAKE CHARLES APP CON ★ <b>119.8 282.3</b>	UNICOM <b>122.8</b> (CTAF) <b>0</b>
----------------------------	----------------------------------------------	----------------------------------------



ELEV 23	TDZE 20
---------	---------



CATEGORY	A	B	C	D
LPV DA	290-7/8	270 (300-7/8)		NA
LNAV/VNAV DA	300-7/8	280 (300-7/8)		NA
LNAV MDA	400-1	380 (400-1)		NA
<b>C</b> CIRCLING	580-1	557 (600-1)	680-13/4 657 (700-13/4)	NA

REIL Rwy 8, 26, 13, and 31  
 MIRL Rwy 8-26 and 13-31 **0**

SC-4, 22 FEB 2024 to 21 MAR 2024

SC-4, 22 FEB 2024 to 21 MAR 2024

WAAS CH <b>90436</b> <b>W08A</b>	APP CRS <b>077°</b>	Rwy Idg <b>5002</b> TDZE <b>17</b> Apt Elev <b>23</b>
----------------------------------------	------------------------	-------------------------------------------------------------

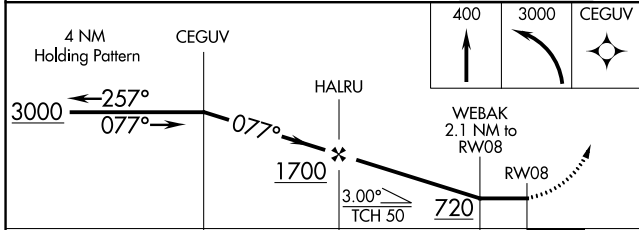
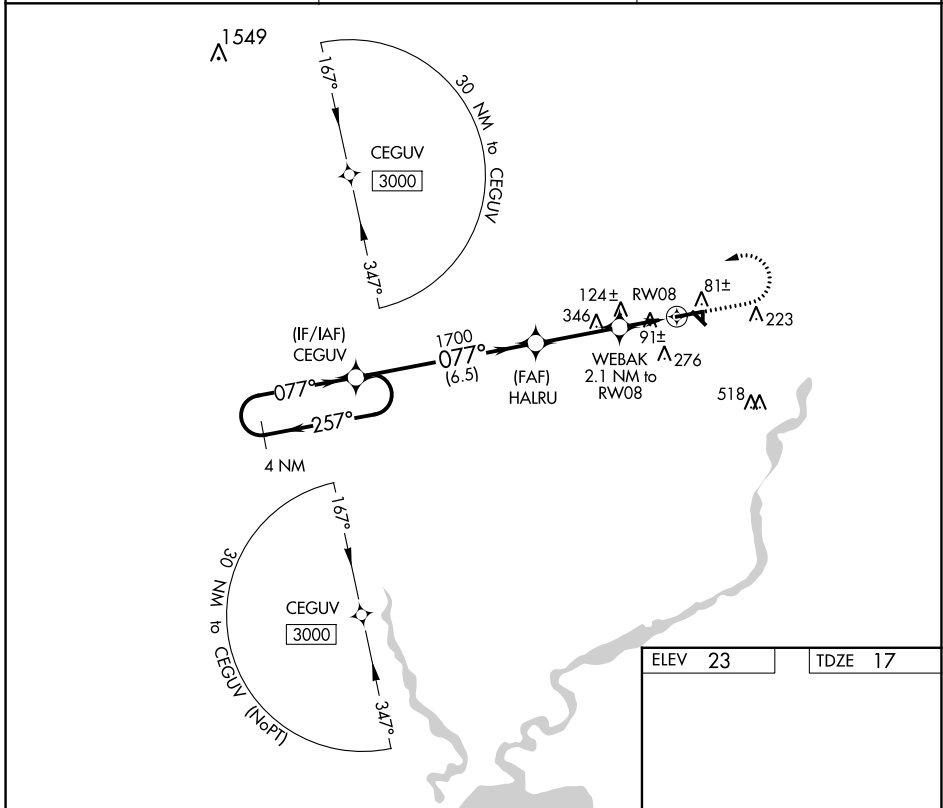
# RNAV (GPS) RWY 8

JENNINGS (3R7)

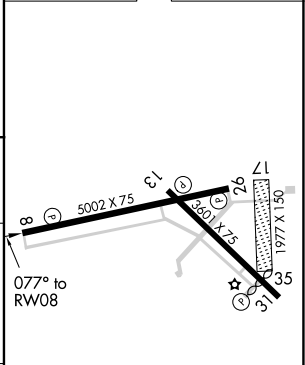
**⚠** DME/DME RNP-0.3 NA. Night landing: Rwy 08, 31 NA. Helicopter visibility reduction below 1 SM NA. When local altimeter setting not received, use Lake Charles Rgnl altimeter setting: Increase all MDA 80 ft, LP Cat C visibility ¼ mile, LNAV Cat C visibility ⅜ mile, and Circling Cat C visibility ¼ mile.

**⚠** MISSED APPROACH: Climb to 400 then climbing left turn to 3000 direct CEGUV and hold.

AWOS-3PT <b>121.150</b>	LAKE CHARLES APP CON* <b>119.8 282.3</b>	UNICOM <b>122.8 (CTAF) 0</b>
----------------------------	---------------------------------------------	---------------------------------



ELEV 23	TDZE 17
---------	---------



CATEGORY	A	B	C	D
LP MDA	360-1	343 (400-1)		NA
LNAV MDA	380-1	363 (400-1)		NA
<b>CIRCLING</b>	580-1	557 (600-1)	680-1¾ 657 (700-1¾)	NA

REIL Rwy 8, 26, 13, and 31  
MIRL Rwy 8-26 and 13-31 **0**

SC-4, 22 FEB 2024 to 21 MAR 2024

SC-4, 22 FEB 2024 to 21 MAR 2024