

WAAS CH 97416 W25A	APP CRS 252°	Rwy Idg TDZE 643 Apt Elev 643	4000 643 643
--	------------------------	---	---

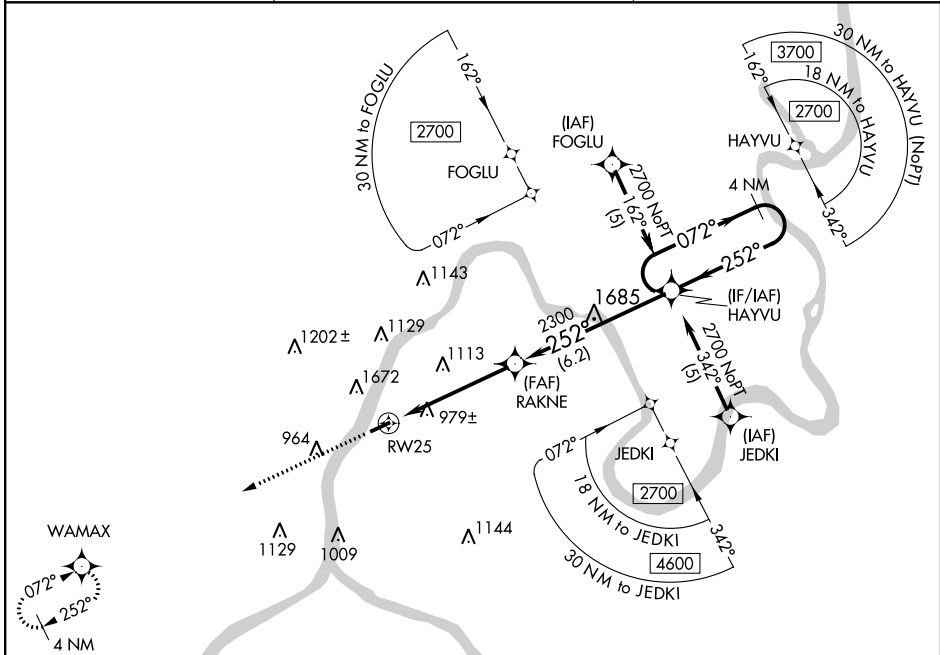
RNAV (GPS) RWY 25

MASON COUNTY (3I2)

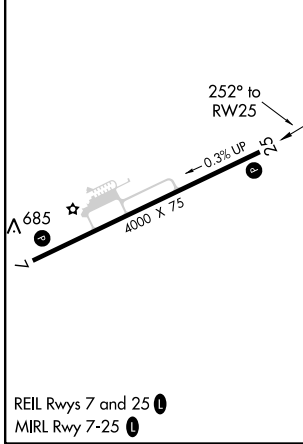
⚠ Circling NA NW of Rwy 7-25. Baro-VNAV NA when using Athens/Albany, OH altimeter setting. For uncompensated Baro-VNAV systems, LNAV/VNAV NA below -16° C (4°F) or above 47° C (116°F). DME/DME RNP - 0.3 NA. Visibility reduction by helicopters NA. When local altimeter setting not received, use Athens/Albany, OH altimeter setting and increase all DA 61 feet and all MDA 80 feet; increase LPV all Cats visibility ¼ mile and increase LNAV-VNAV all Cats visibility 1 mile.

⚠ MISSED APPROACH: Climb to 3200 direct WAMAX and hold.

AWOS-3 119.675	HUNTINGTON APP CON 128.4 270.1	UNICOM 122.8 (CTAF) 0
--------------------------	--	---------------------------------



ELEV 643	TDZE 643
-----------------	-----------------



3200	WAMAX	HAYVU	4 NM Holding Pattern
↑	✦	RAKNE	
252°	252°	072°	2700
2300	2300	252°	GP 3.00° TCH 54
5 NM	6.2 NM		
CATEGORY	A	B	C
LPV DA		1430-2¾	787 (800-2¾)
LNAV/VNAV DA		1727-4	1084 (1100-4)
LNAV MDA	1700-1¼ 1057 (1100-1¼)	1700-1½ 1057 (1100-1½)	1700-3 1057 (1100-3)
CIRCLING	1700-1¼ 1057 (1100-1¼)	1700-1½ 1057 (1100-1½)	1700-3 1057 (1100-3)

NE-4, 02 DEC 2021 to 30 DEC 2021

NE-4, 02 DEC 2021 to 30 DEC 2021

APP CRS	Rwy ldg	4000
072°	TDZE	643
	Apt Elev	643

RNAV (GPS) RWY 7

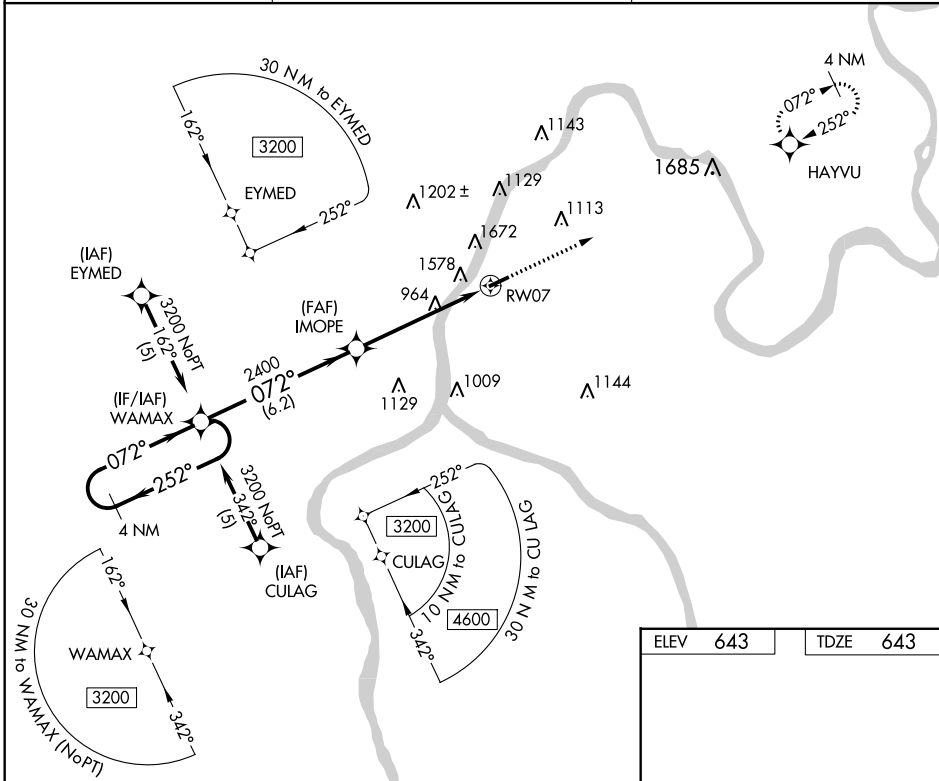
MASON COUNTY (3I2)

⚠ Circling NA NW of Rwy 7-25. DME/DME RNP- 0.3 NA. Visibility reduction by helicopters NA. When local altimeter setting not received, use Athens/Albany, OH altimeter setting and increase all MDA 80 feet. Straight-in and Circling NA at night to Rwy 7.

⚠ -17°C

MISSED APPROACH:
Climb to 2700 direct HAYVU and hold.

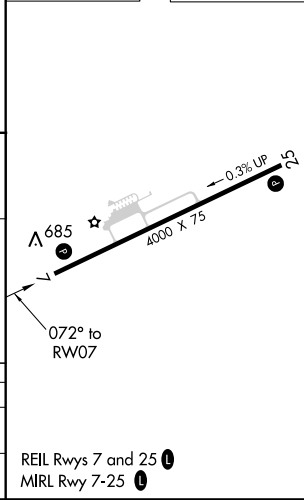
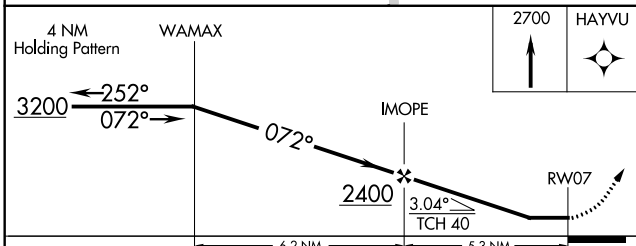
AWOS-3 119.675	HUNTINGTON APP CON 128.4 270.1	UNICOM 122.8 (CTAF) 0
--------------------------	--	---------------------------------



NE-4, 02 DEC 2021 to 30 DEC 2021

NE-4, 02 DEC 2021 to 30 DEC 2021

ELEV	643	TDZE	643
------	------------	------	------------



CATEGORY	A	B	C	D
LNVA MDA	1880-1¼ 1237 (1300-1¼)	1880-1½ 1237 (1300-1½)	1880-3	1237 (1300-3)
CIRCLING	1880-1¼ 1237 (1300-1¼)	1880-1½ 1237 (1300-1½)	1880-3	1237 (1300-3)

REIL Rws 7 and 25 **0**
MIRL Rwy 7-25 **0**