

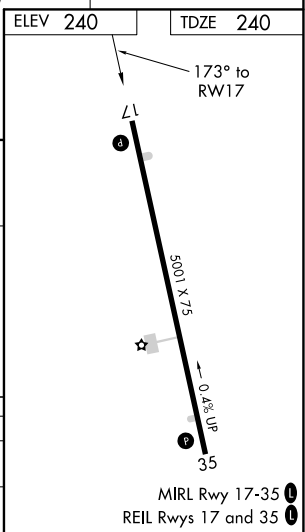
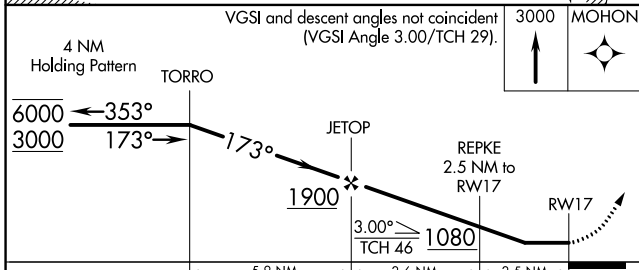
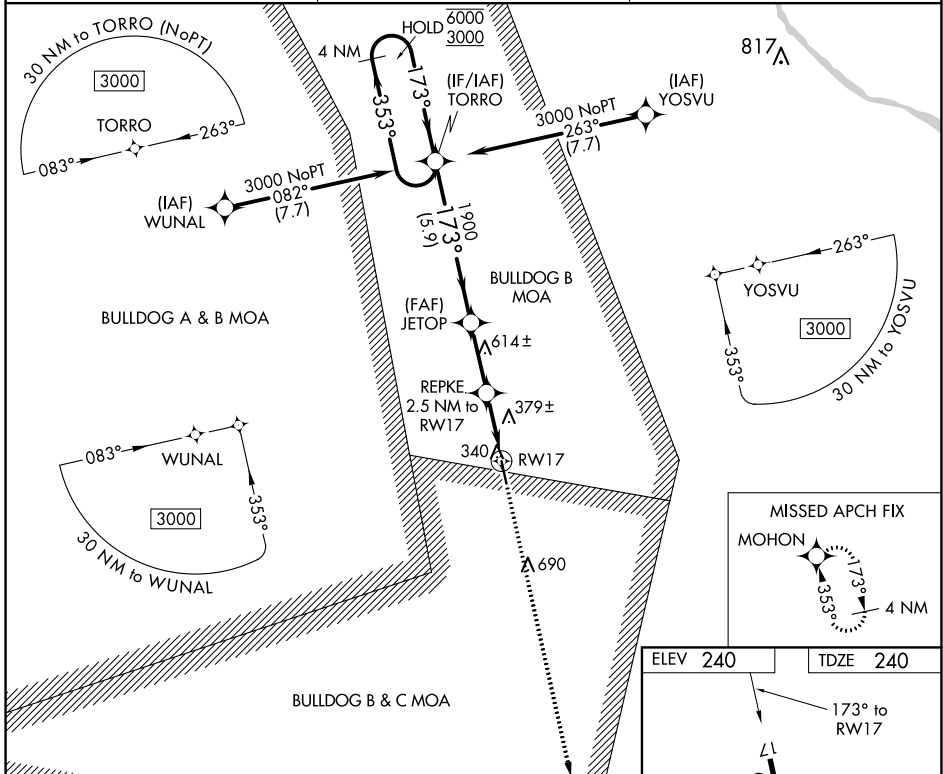
APP CRS	Rwy Idg	5001
173°	TDZE	240
	Apt Elev	240

RNAV (GPS) RWY 17

MILLEN (2J5)

RNP APCH.	<p>⚠ Circling NA east of Rwy 17-35. Rwy 17 helicopter visibility reduction below 1 SM NA. Straight-in and Circling Rwy 17 NA at night.</p>	<p>MISSED APPROACH: Climb to 3000 direct MOHON and hold.</p>
-----------	--	--

AWOS-3PT 120.2	AUGUSTA APP CON * 126.8 270.3	CTAF 122.90
--------------------------	---	-----------------------



CATEGORY	A	B	C	D
LNVA MDA	640-1	400 (400-1)	640-1½	400 (400-1½)
Ⓢ CIRCLING	680-1 440 (500-1)	700-1 460 (500-1)	700-1½ 460 (500-1½)	1040-2½ 800 (800-2½)

SE-4, 27 JAN 2022 to 24 FEB 2022

SE-4, 27 JAN 2022 to 24 FEB 2022

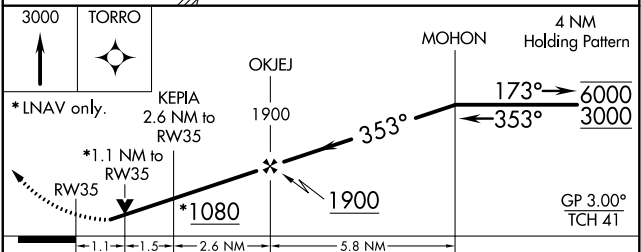
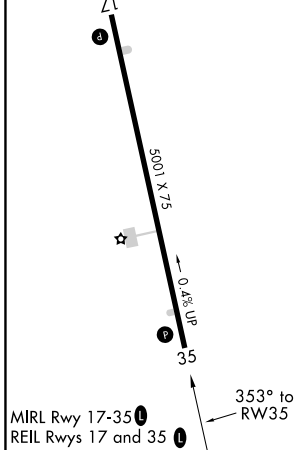
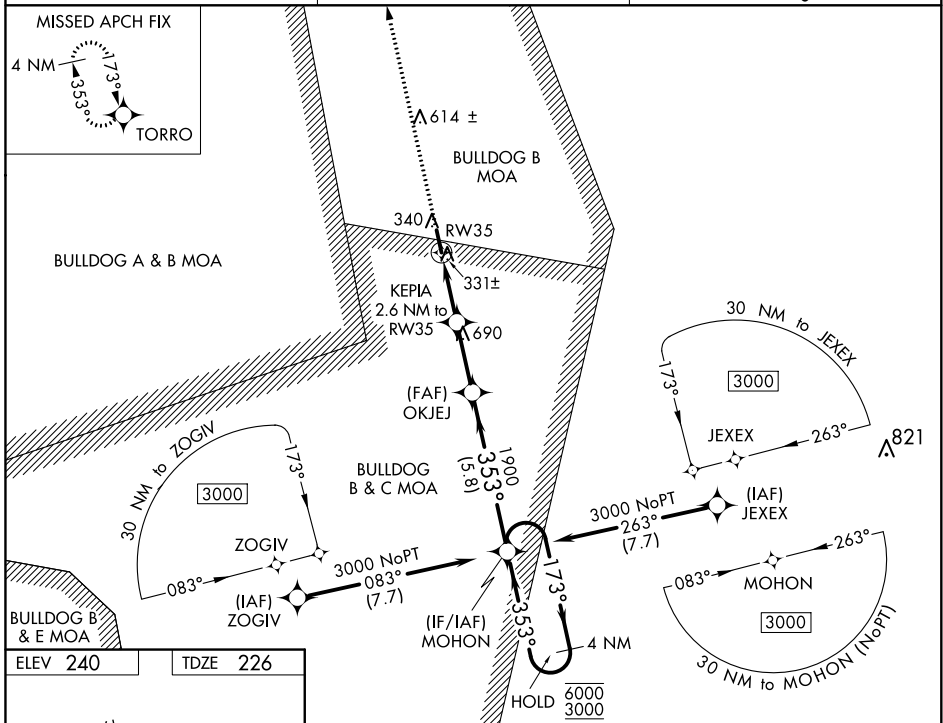
WAAS CH 53718 W35A	APP CRS 353°	Rwy Idg TDZE Apt Elev	5001 226 240
--	------------------------	-----------------------------	---

RNAV (GPS) RWY 35

MILLEN (2J5)

RNP APCH.	<p>▽ Circling NA east of Rwy 17-35. For uncompensated Baro-VNAV systems, LNAV/VNAV NA below -15°C or above 54°C. Rwy 35 helicopter visibility reduction below ¼ SM NA. Circling Rwy 17 NA at night.</p> <p>▲</p>	MISSED APPROACH: Climb to 3000 direct TORRO and hold.
-----------	--	---

AWOS-3PT 120.2	AUGUSTA APP CON * 126.8 270.3	CTAF 122.9
--------------------------	---	----------------------



CATEGORY	A	B	C	D
LPV DA		476-1	250 (300-1)	
LNAV/VNAV DA		633-1½	407 (400-1½)	
LNAV MDA		600-1	374 (400-1)	
C CIRCLING	680-1 440 (500-1)	700-1 460 (500-1)	700-1½ 460 (500-1½)	1040-2½ 800 (800-2½)

SE-4, 27 JAN 2022 to 24 FEB 2022

SE-4, 27 JAN 2022 to 24 FEB 2022