

APP CRS	Rwy Idg	<b>3907</b>
<b>359°</b>	TDZE	<b>512</b>
	Apt Elev	<b>516</b>

# RNAV (GPS) RWY 36

COMMERCE MUNI (2F7)

RNP APCH.

**▼** Use Greenville altimeter setting, when not received, use Sulphur Springs altimeter setting and increase all MDAs 20 feet. Rwy 36 helicopter visibility reduction below 3/4 SM NA.

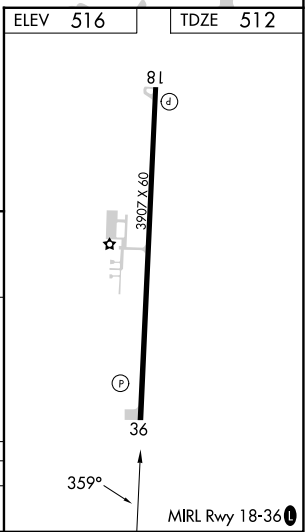
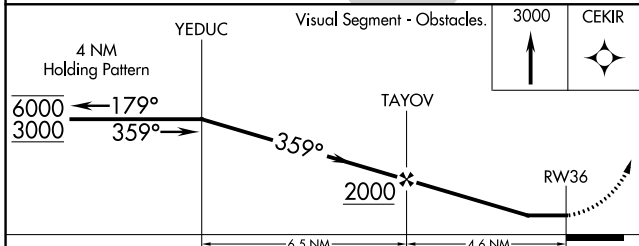
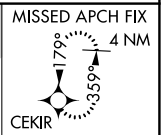
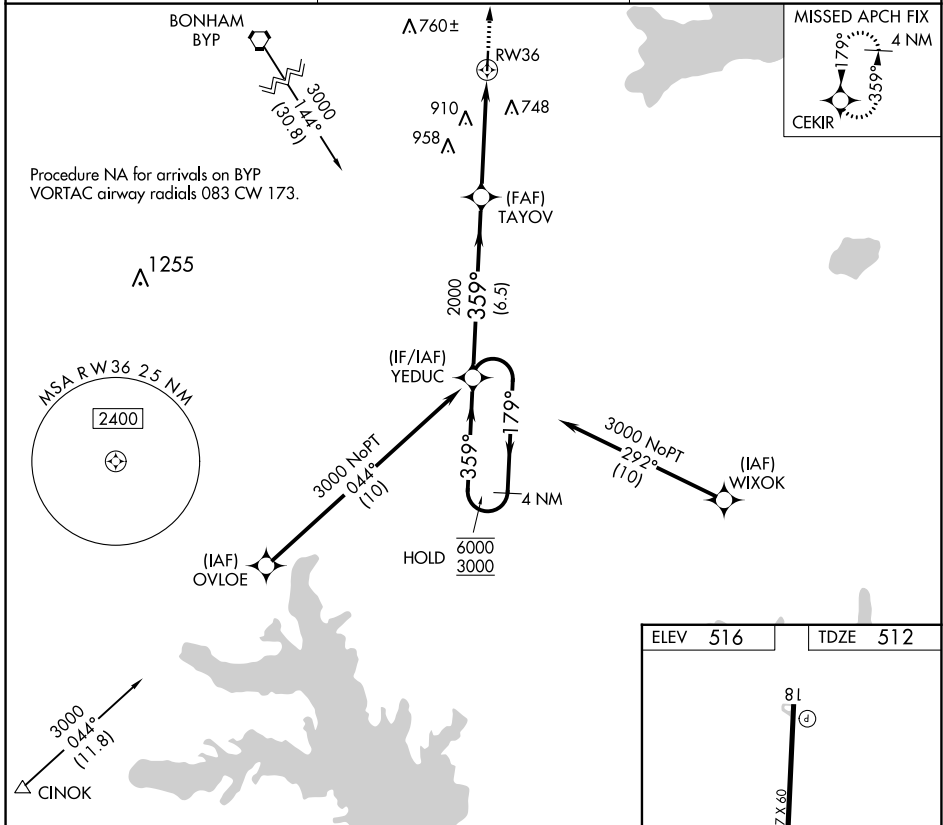
**▲ NA**

**MISSED APPROACH:** Climb to 3000 direct CEKIR and hold.

GVT AWOS-3  
**133.425**

FORT WORTH CENTER  
**127.6 254.3**

CTAF  
**122.9**



CATEGORY	A	B	C	D
LNAV MDA	1140-1	628 (700-1)	NA	

SC-2, 22 FEB 2024 to 21 MAR 2024

SC-2, 22 FEB 2024 to 21 MAR 2024