

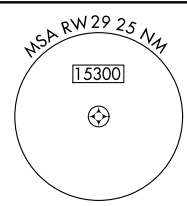
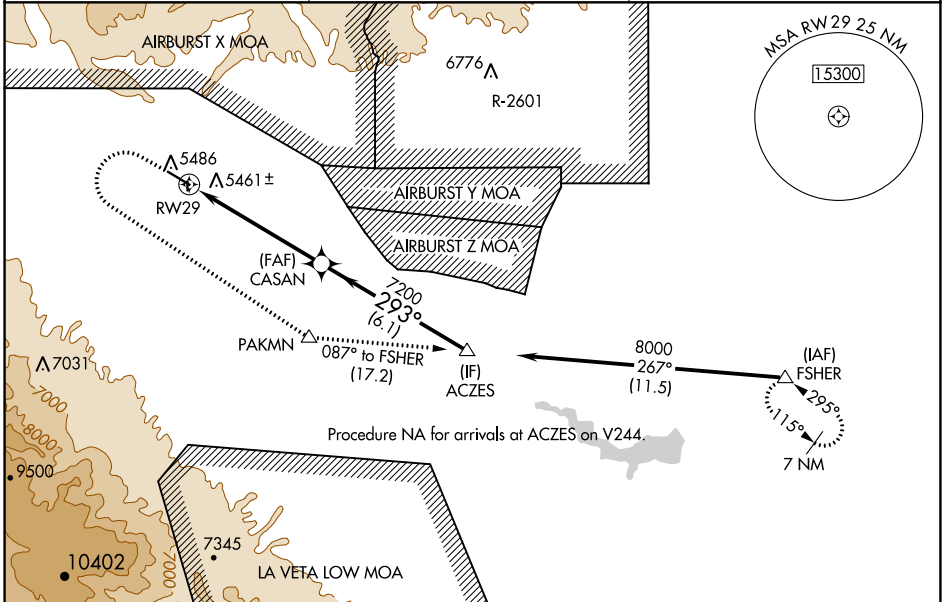
WAAS CH 69530 W29A	APP CRS 293°	Rwy Idg TDZE Apt Elev	5399 5407 5442
--	------------------------	-----------------------------	---

RNAV (GPS) RWY 29

FREMONT COUNTY (1V6)

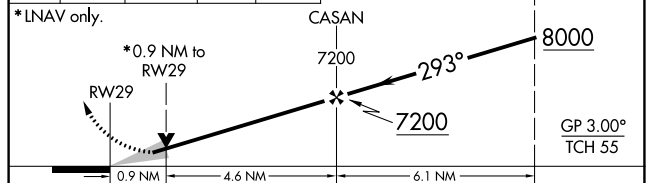
RNP APCH. ▼ For uncompensated Baro-VNAV systems, LNAV/VNAV NA below -25°C or above 54°C. Circling NA north of Rwy 11-29. Circling NA to Rwy 35.	MISSED APPROACH: (Do not exceed 210K until PAKMN) Climb to 5900 then climbing left turn to 8000 direct PAKMN and track 087° to FSHER and hold.
--	--

AWOS-3 120.025	DENVER APP CON * 120.1 290.5	UNICOM 122.8 (CTAF) 0
--------------------------	--	--

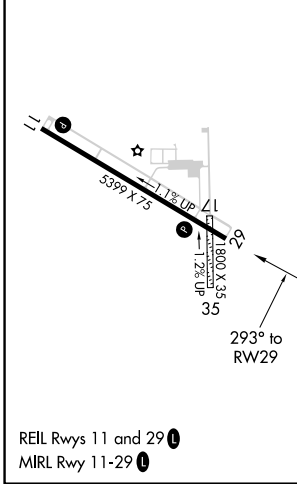


ELEV 5442	TDZE 5407
------------------	------------------

5900	8000	PAKMN	tr 087°	FSHER	VGSI and RNAV glidepath not coincident (VGSI Angle 3.00/TCH 40).	ACZES
------	------	-------	---------	-------	--	-------



CATEGORY	A	B	C	D
LPV DA	5657-3/4 250 (300-3/4)			NA
LNAV/VNAV DA	5657-3/4 250 (300-3/4)			NA
LNAV MDA	5720-1	313 (300-1)	5720-7/8 313 (300-7/8)	NA
C CIRCLING	5800-1 358 (400-1)	5900-1 458 (500-1)	5980-1 1/2 538 (600-1 1/2)	NA



SW-1, 22 FEB 2024 to 21 MAR 2024

SW-1, 22 FEB 2024 to 21 MAR 2024