

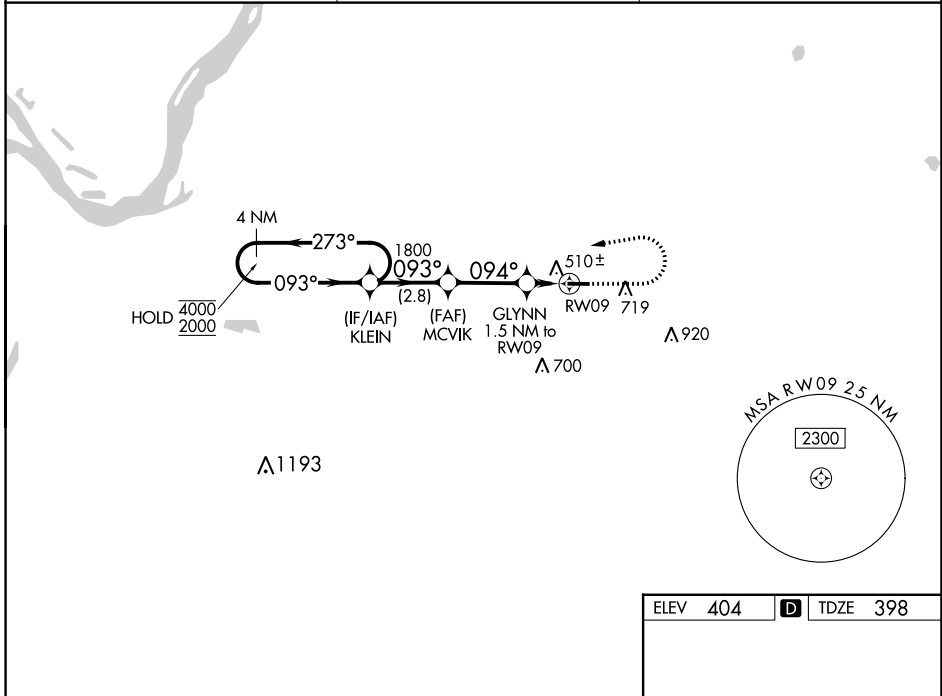
WAAS CH <b>82344</b> <b>W09A</b>	APP CRS <b>094°</b>	Rwy Idg TDZE Apt Elev	<b>3841</b> <b>398</b> <b>404</b>
--	------------------------	-----------------------------	---

# RNAV (GPS) RWY 9

FULTON (1M7)

RNP APCH - GPS.	<p><b>▼</b> Circling NA south of Rwy 9-27. Circling Rwy 27 NA at night. Rwy 9 helicopter visibility reduction below 3/4 SM NA. Baro-VNAV NA. Use Union City altimeter setting; when not received, use Mayfield altimeter setting and increase LPV DA to 720, LNAV/VNAV DA to 759, and increase all MDAs 40 feet.</p>	<p>MISSED APPROACH: Climb to 900 then climbing left turn to 2000 direct KLEIN and hold.</p>
<p><b>▲</b> NA</p>		

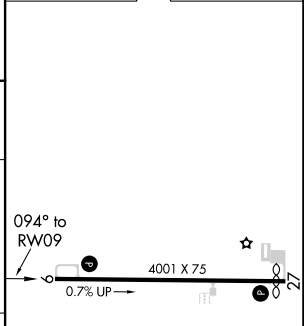
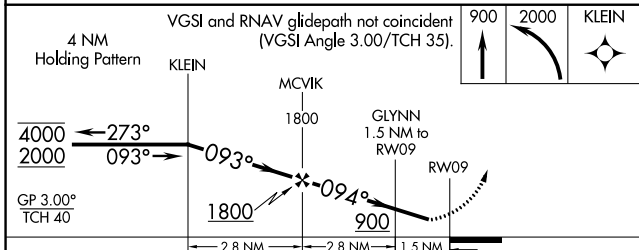
UCY AWOS-3 <b>135.325</b>	MEMPHIS CENTER <b>133.65 292.15</b>	UNICOM <b>122.7 (CTAF)</b>
------------------------------	--	-------------------------------



SE-1, 22 FEB 2024 to 21 MAR 2024

SE-1, 22 FEB 2024 to 21 MAR 2024

ELEV <b>404</b>	<b>D</b> TDZE <b>398</b>
-----------------	--------------------------



CATEGORY	A	B	C	D
LPV DA	682-1	284 (300-1)		NA
LNAV/VNAV DA	721-1	323 (400-1)		NA
LNAV MDA	800-1	402 (400-1)		NA
<b>C</b> CIRCLING	920-1 516 (600-1)	1000-1 596 (600-1)		NA

HIRL Rwy 9-27 **1**  
REIL Rwys 9-27 **1**