

WAAS CH <b>82124</b> <b>W01A</b>	APP CRS <b>013°</b>	Rwy Idg TDZE Apt Elev	<b>5000</b> <b>817</b> <b>817</b>
--	------------------------	-----------------------------	---

# RNAV (GPS) RWY 1

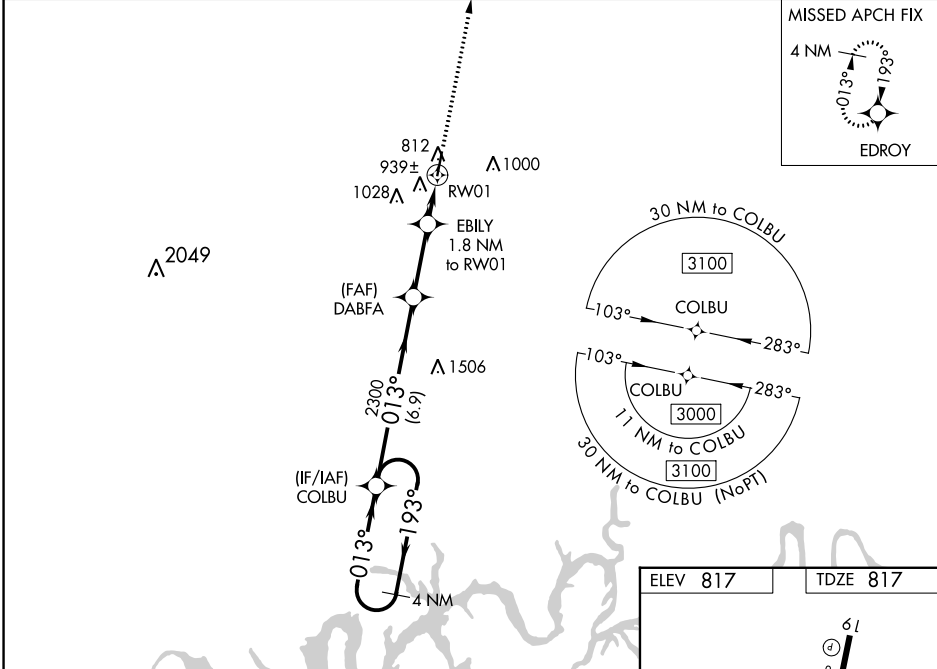
DOUGLAS HUNTER FLD (1M5)

RNP APCH.

**⚠** Baro-VNAV NA when using Bowling Green altimeter setting. For uncompensated Baro-VNAV systems, LNAV/VNAV NA below -16°C or above 54°C. Rwy 1 helicopter visibility reduction below 3/4 SM NA. When local altimeter setting not received, use Bowling Green altimeter setting and increase LPV DA to 1180 and all visibilities 1/8 mile; increase all LNAV/VNAV DA to 1210 and all visibilities 1/4 mile; increase all MDA 100 feet and increase LNAV Cats C/D visibility 1/4 mile.

MISSED APPROACH: Climb to 3000 direct EDROY and hold.

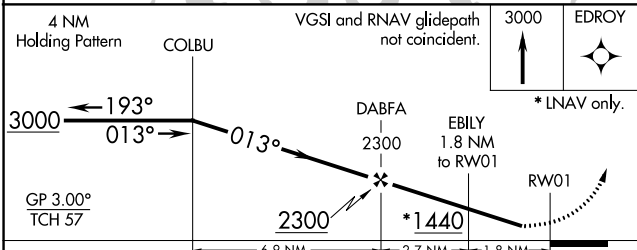
AWOS-3PT <b>118.175</b>	NASHVILLE APP CON <b>119.35 372.0</b>	UNICOM <b>122.975 (CTAF) 0</b>
----------------------------	--	-----------------------------------



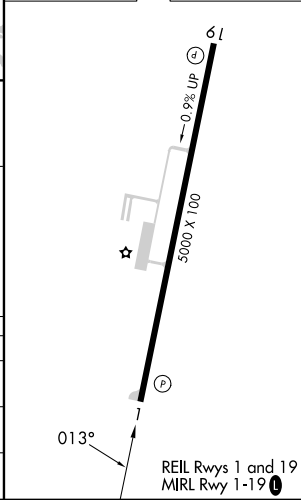
SE-1, 22 FEB 2024 to 21 MAR 2024

SE-1, 22 FEB 2024 to 21 MAR 2024

ELEV 817	TDZE 817
----------	----------



CATEGORY	A	B	C	D
LPV DA		1090-1	273 (300-1)	
LNAV/VNAV DA		1120-1	303 (400-1)	
LNAV MDA	1200-1	383 (400-1)	1200-1 1/8	383 (400-1 1/8)



WAAS CH <b>40324</b> <b>W19A</b>	APP CRS <b>193°</b>	Rwy Idg TDZE Apt Elev	<b>5000</b> <b>804</b> <b>817</b>
--	------------------------	-----------------------------	---

# RNAV (GPS) RWY 19

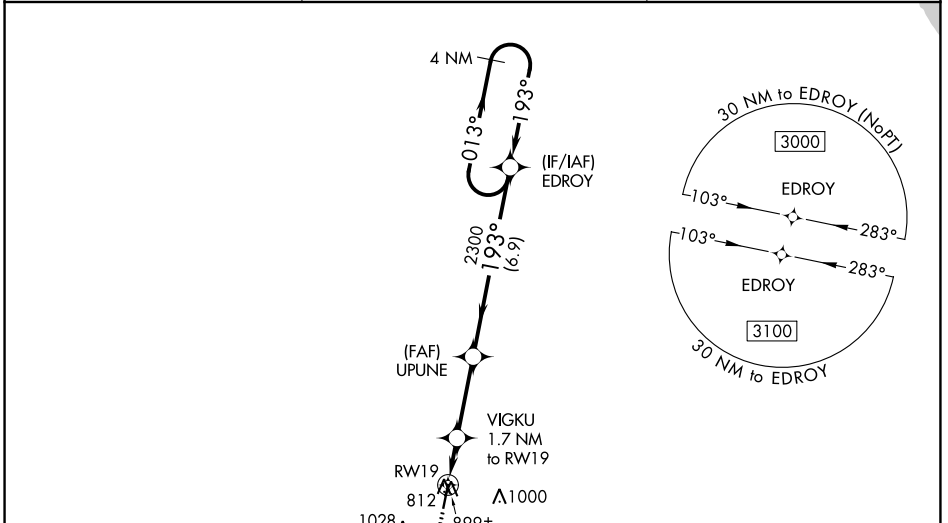
DOUGLAS HUNTER FLD (1M5)

RNP APCH.

**⚠** For uncompensated Baro-VNAV systems, LNAV/VNAV NA below -16°C or above 54°C. Baro-VNAV and VDP NA when using Bowling Green altimeter setting. When local altimeter setting not received, use Bowling Green altimeter setting and increase LPV DA to 1144 and all visibilities ¼ mile; increase all LNAV/VNAV DA to 1184 and all visibilities ¼ mile; increase all MDA 100 feet and increase LNAV Cat C/D visibility ⅜ mile.

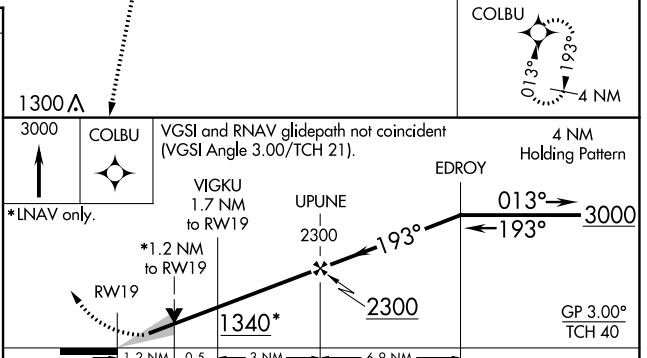
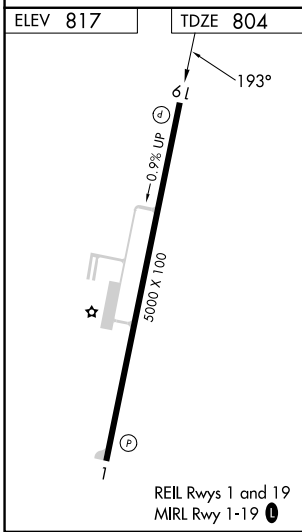
MISSED APPROACH: Climb to 3000 direct COLBU and hold.

AWOS-3PT <b>118.175</b>	NASHVILLE APP CON <b>119.35 372.0</b>	UNICOM <b>122.975 (CTAF)</b>
----------------------------	--	---------------------------------



SE-1, 22 FEB 2024 to 21 MAR 2024

SE-1, 22 FEB 2024 to 21 MAR 2024



CATEGORY	A	B	C	D
LPV DA		1054-1	250 (300-1)	
LNAV/VNAV DA		1094-1½	290 (300-1½)	
LNAV MDA		1160-1	356 (400-1)	