

WAAS CH <b>62803</b> <b>W10A</b>	APP CRS <b>096°</b>	Rwy Idg TDZE Apt Elev	<b>4199</b> <b>673</b> <b>673</b>
--	------------------------	-----------------------------	---

# RNAV (GPS) RWY 10

WOOD COUNTY (1G4)

RNP APCH.

- Circling Rwy 36 NA at night. VDP NA when using Toledo Express altimeter setting.
- NA When local altimeter setting not received, use Toledo Express altimeter setting; increase DA to 974 feet; increase all MDA 40 feet and LNAV Cat C visibility ¼ SM, Circling Cat C/D visibility ¼ SM.

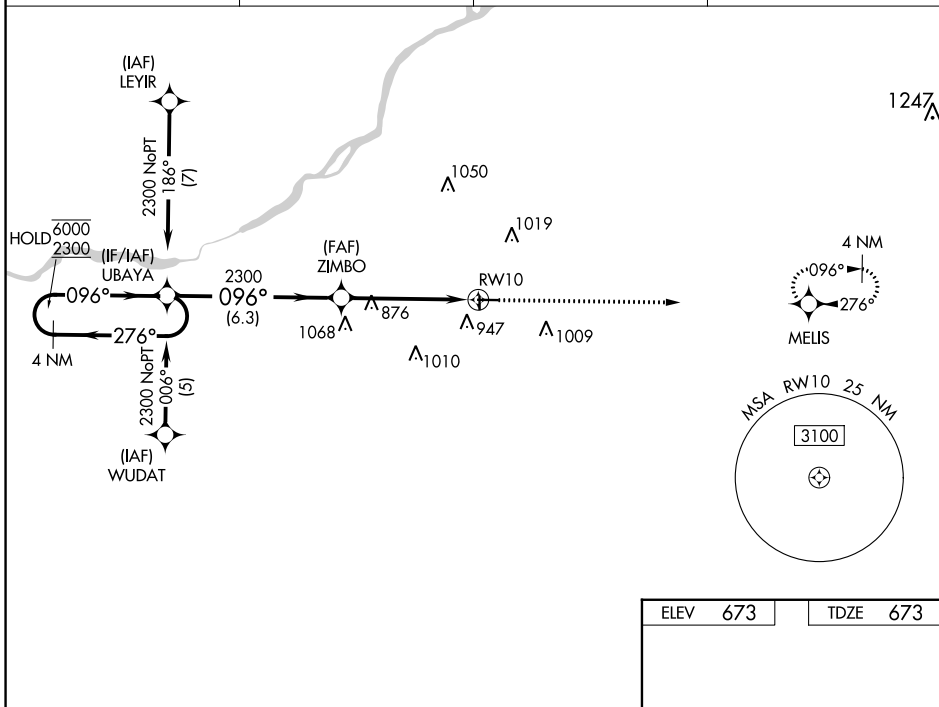
MISSED APPROACH:  
Climb to 2300 direct  
MELIS and hold.

AWOS-3  
**120.725**

TOLEDO APP CON  
**126.1 317.55**

CLNC DEL  
**125.6**

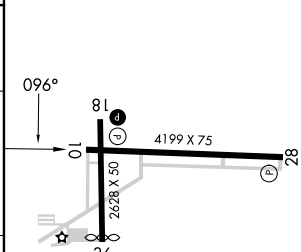
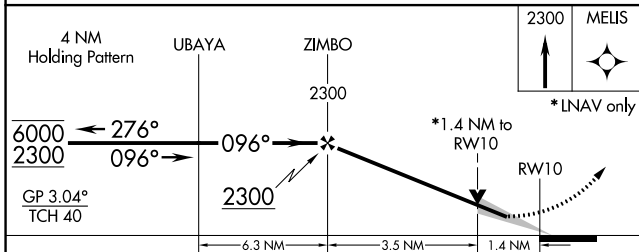
UNICOM  
**122.975 (CTAF)**



EC-2, 22 FEB 2024 to 21 MAR 2024

EC-2, 22 FEB 2024 to 21 MAR 2024

ELEV	673	TDZE	673
------	-----	------	-----



CATEGORY	A	B	C	D
LPV DA	939-1		266 (300-1)	
LNAV MDA	1160-1	487 (500-1)	1160-1 3/8 487 (500-1 3/8)	1160-1 1/2 487 (500-1 1/2)
CIRCLING	1300-1	627 (700-1)	1320-1 3/4 647 (700-1 3/4)	1320-2 647 (700-2)

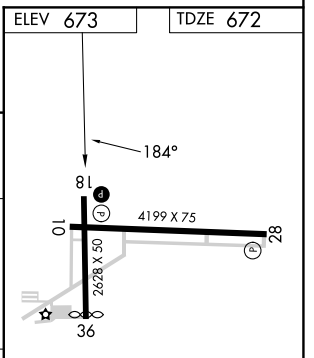
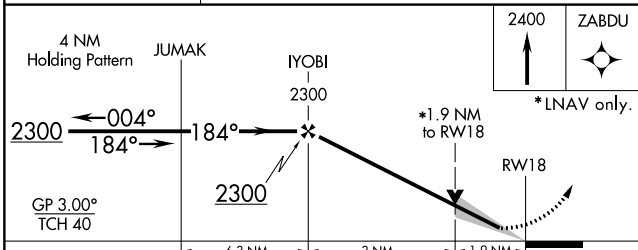
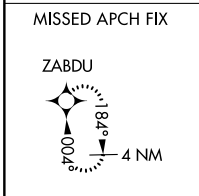
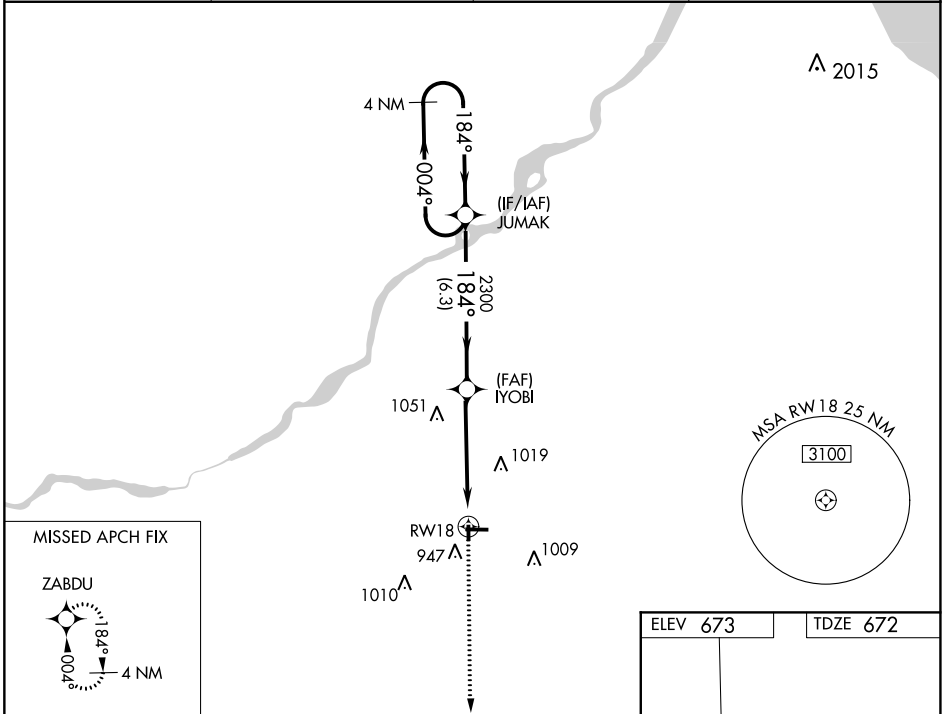
REIL Rwy 10, 18, and 28   
MRL Rwy 10-28 and 18-36

WAAS CH <b>97403</b> <b>W18A</b>	APP CRS <b>184°</b>	Rwy Idg <b>2628</b> TDZE <b>672</b> Apt Elev <b>673</b>
--	------------------------	---

# RNAV (GPS) RWY 18

WOOD COUNTY (1G~~0~~)

RNP APCH.			MISSED APPROACH: Climb to 2400 direct ZABDU and hold.
<p><b>▼</b> Circling Rwy 36 NA at night. VDP NA when using Toledo Express altimeter setting. When local altimeter setting not received, use Toledo Express altimeter setting and increase DA to 957 feet; increase all MDAs 40 feet.</p> <p><b>▲</b> NA</p>			
AWOS-3 <b>120.725</b>	TOLEDO APP CON <b>126.1 317.55</b>	CLNC DEL <b>125.6</b>	UNICOM <b>122.975</b> (CTAF) <b>0</b>



CATEGORY	A	B	C	D
LPV DA	922-1	250 (300-1)		NA
LNAV MDA	1320-1	648 (700-1)		NA
<b>C</b> CIRCLING	1320-1	647 (700-1)		NA

REIL Rwys 10, 18 and 28 **0**  
MIRL Rwys 10-28 and 18-36 **0**

EC-2, 22 FEB 2024 to 21 MAR 2024

EC-2, 22 FEB 2024 to 21 MAR 2024

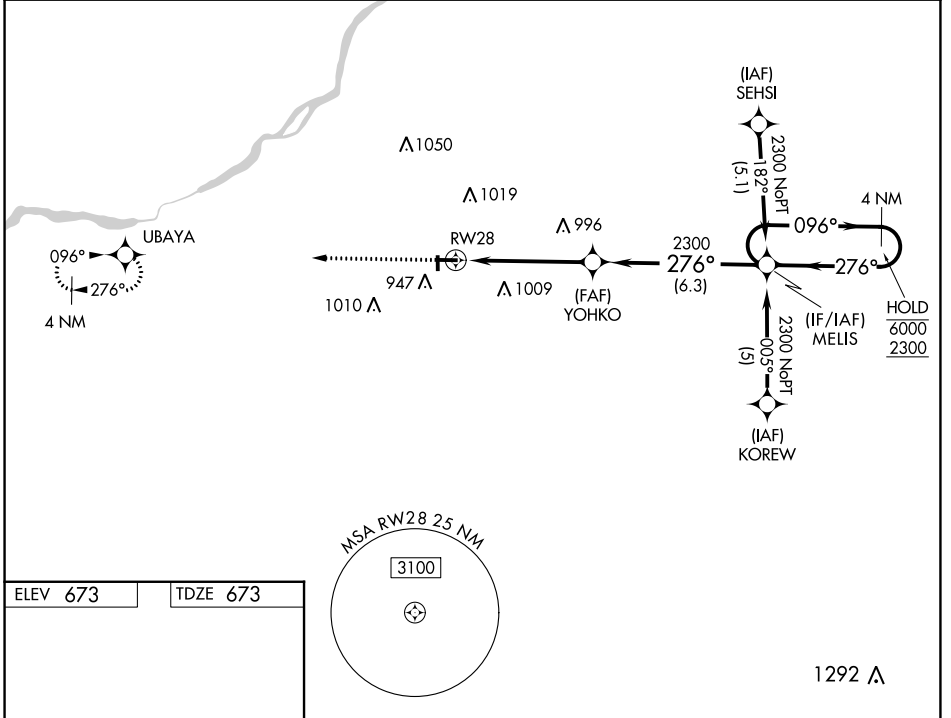
WAAS CH <b>82702</b> <b>W28A</b>	APP CRS <b>276°</b>	Rwy Idg TDZE Apt Elev	<b>4199</b> <b>673</b> <b>673</b>
--	------------------------	-----------------------------	---

# RNAV (GPS) RWY 28

WOOD COUNTY (1G $\emptyset$ )

RNP APCH.	<p><b>▽</b> Circling Rwy 36 NA at night. Rwy 28 helicopter visibility reduction below <math>\frac{3}{4}</math> SM NA. VDP NA when using Toledo Express altimeter setting.</p> <p><b>⚠</b> NA When local altimeter setting not received, use Toledo Express altimeter setting: increase DA to 958 feet; increase all MDA 40 feet and LNAV Cat C visibility <math>\frac{1}{8}</math> SM, Circling Cats C/D visibility <math>\frac{1}{4}</math> SM.</p>	MISSED APPROACH: Climb to 2300 direct UBAYA and hold.
-----------	--	---

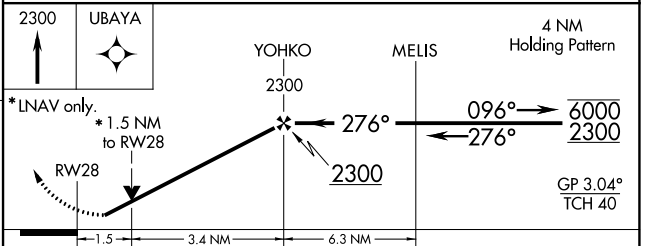
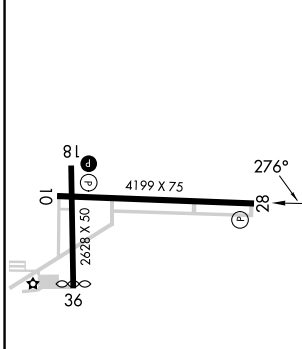
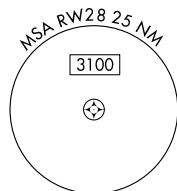
AWOS-3 <b>120.725</b>	TOLEDO APP CON <b>126.1 317.55</b>	CLNC DEL <b>125.6</b>	UNICOM <b>122.975 (CTAF) <math>\emptyset</math></b>
--------------------------	---------------------------------------	--------------------------	--



EC-2, 22 FEB 2024 to 21 MAR 2024

EC-2, 22 FEB 2024 to 21 MAR 2024

ELEV <b>673</b>	TDZE <b>673</b>
-----------------	-----------------



CATEGORY	A	B	C	D
LPV DA	923-1 250 (300-1)			
LNAV MDA	1200-1	527 (600-1)	1200-1 $\frac{1}{2}$ 527 (600-1 $\frac{1}{2}$ )	1200-1 $\frac{3}{4}$ 527 (600-1 $\frac{3}{4}$ )
CIRCLING	1300-1	627 (700-1)	1320-1 $\frac{3}{4}$ 647 (700-1 $\frac{3}{4}$ )	1320-2 647 (700-2)

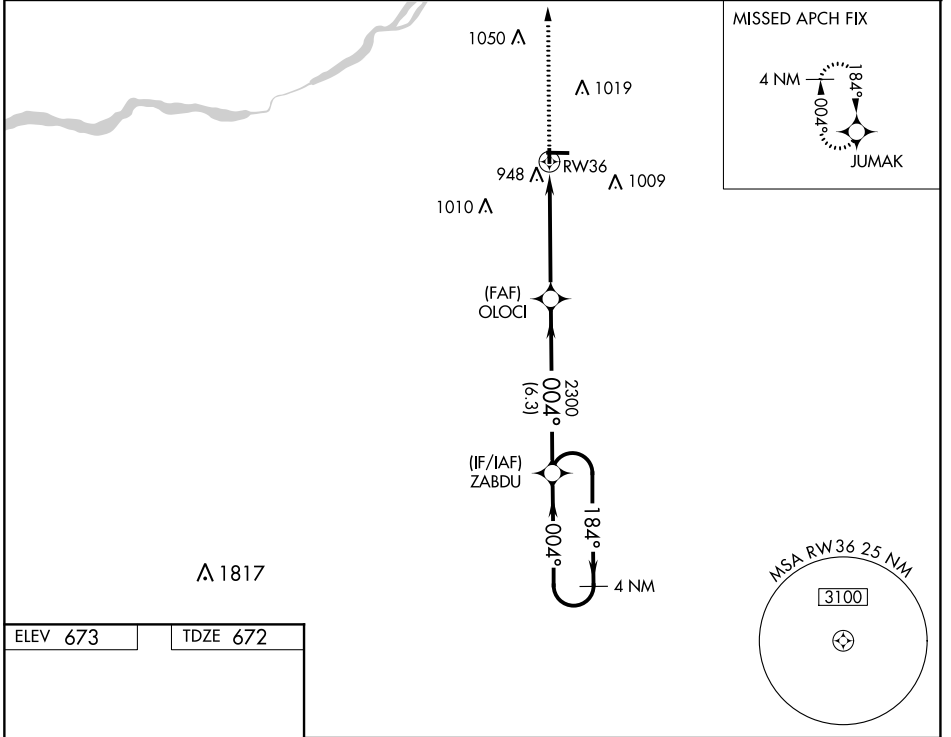
APP CRS	Rwy Idg	<b>2560</b>
<b>004°</b>	TDZE	<b>672</b>
	Apt Elev	<b>673</b>

# RNAV (GPS) RWY 36

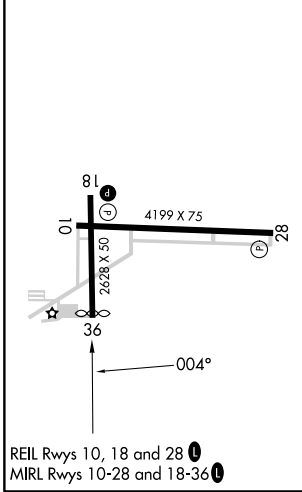
WOOD COUNTY (1G $\emptyset$ )

RNP APCH.	Rwy 36 helicopter visibility reduction below 1 SM NA. When local altimeter setting not received, use Toledo Express altimeter setting and increase all MDAs 40 feet. Straight-in and Circling Rwy 36 NA at night.	MISSED APPROACH: Climb to 2300 direct JUMAK and hold.
-----------	---	---

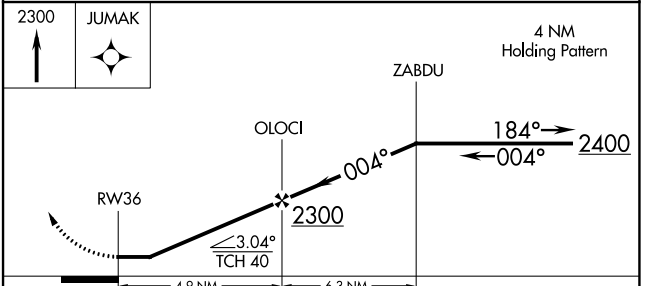
AWOS-3 <b>120.725</b>	TOLEDO APP CON <b>126.1 317.55</b>	CLNC DEL <b>125.6</b>	UNICOM <b>122.975 (CTAF)</b> $\emptyset$
--------------------------	---------------------------------------	--------------------------	---



ELEV 673	TDZE 672
----------	----------



REIL Rwy 10, 18 and 28  $\emptyset$   
MIRL Rwy 10-28 and 18-36  $\emptyset$



CATEGORY	A	B	C	D
LNAV MDA	1260-1	588 (600-1)	NA	
$\square$ CIRCLING	1300-1	627 (700-1)	NA	

EC-2, 22 FEB 2024 to 21 MAR 2024

EC-2, 22 FEB 2024 to 21 MAR 2024