

GOSHEN NINE ARRIVAL  
(GSH.GSH9) 15JUN23

GOSHEN NINE ARRIVAL  
(GSH.GSH9) 23334

CHICAGO APP CON  
128.2 353.875  
GYA ATIS  
134.575  
MDW D-ATIS  
132.75

CHICAGO  
MIDWAY  
INTL

AWSUM  
TURBOJET VERTICAL NAVIGATION  
PLANNING INFORMATION  
Expect 10000.

GIPPER  
115.4 GIJ ---  
Chan 101

GOSHEN  
113.7 GSH ---  
Chan 84

GARY/  
CHICAGO INTL  
HOBART  
SKY RANCH  
GRIFFITH-  
MERRILLVILLE  
LANSING  
MUNI

HALIE  
IROCK

CHICAGO HEIGHTS  
114.2 CGT ---  
Chan 89

MEGGZ  
TURBOJET VERTICAL NAVIGATION  
PLANNING INFORMATION  
Expect 11000.

FORT WAYNE  
117.8 FWA ---  
Chan 125

PEOTONE  
113.2 EON ---  
Chan 79

NOTE: Chart not to scale.

NOTE: RADAR required.  
NOTE: DME required.

ARRIVAL ROUTE DESCRIPTION

FORT WAYNE TRANSITION (FWA.GSH9): From over FWA VORTAC on FWA R-335 to BAGEL then on GSH R-092 to GSH VORTAC. Thence....

BAGEL TRANSITION (BAGEL.GSH9): From over BAGEL on GSH R-092 to GSH VORTAC. Thence....

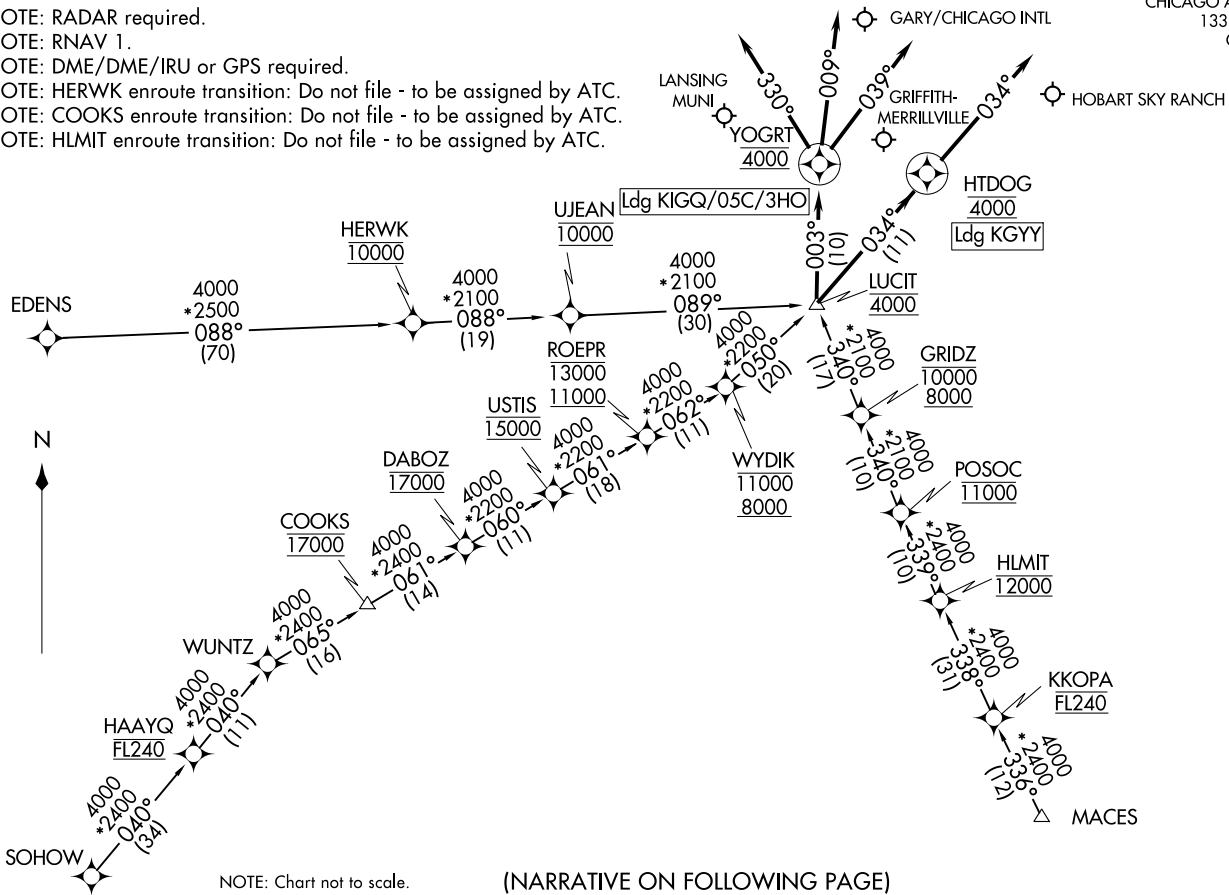
...from over GSH VORTAC on GSH R-270 to MEGGZ, then on GSH R-270 to AWSUM, then on GSH R-270 and CGT R-087 to IROCK, then on CGT R-087 to HALIE, then on CGT R-087 to CGT VORTAC. Expect RADAR vectors to final approach course.

CHICAGO, ILLINOIS

CHICAGO, ILLINOIS

CHICAGO APP CON  
133.1 285.6  
GY ATIS  
134.575

NOTE: RADAR required.  
NOTE: RNAV 1.  
NOTE: DME/DME/IRU or GPS required.  
NOTE: HERWK enroute transition: Do not file - to be assigned by ATC.  
NOTE: COOKS enroute transition: Do not file - to be assigned by ATC.  
NOTE: HLMIT enroute transition: Do not file - to be assigned by ATC.



NOTE: Chart not to scale.

(NARRATIVE ON FOLLOWING PAGE)

LUCIT TWO ARRIVAL (RNAV)  
(LUCIT.LUCIT2) 17JUN21

(LUCIT.LUCIT2) 21336  
LUCIT TWO ARRIVAL (RNAV)

AL-748 (FAA)

GARY, INDIANA

GARY, INDIANA

ARRIVAL ROUTE DESCRIPTION

COOKS TRANSITION (COOKS.LUCIT2):

EDENS TRANSITION (EDENS.LUCIT2):

HERWK TRANSITION (HERWK.LUCIT2):

HLMIT TRANSITION (HLMIT.LUCIT2):

MACES TRANSITION (MACES.LUCIT2):

SOHOW TRANSITION (SOHOW.LUCIT2):

LANDING 05C: From LUCIT on track 003° to cross YOGRT at 4000, then on track 009°. Expect RADAR vectors to final approach course.

LANDING 3HO: From LUCIT on track 003° to cross YOGRT at 4000, then on track 039°. Expect RADAR vectors to final approach course.

LANDING GYY: From LUCIT on track 034° to cross HTDOG at 4000, then on track 034°. Expect RADAR vectors to final approach course.

LANDING IGQ: From LUCIT on track 003° to cross YOGRT at 4000, then on track 330°. Expect RADAR vectors to final approach course.

EC-2, 22 FEB 2024 to 21 MAR 2024

EC-2, 22 FEB 2024 to 21 MAR 2024